

WAAS CH 72907 W26A	APP CRS 261°	Rwy Idg 5263 TDZE 910 Apt Elev 912
--	------------------------	---

RNAV (GPS) RWY 26

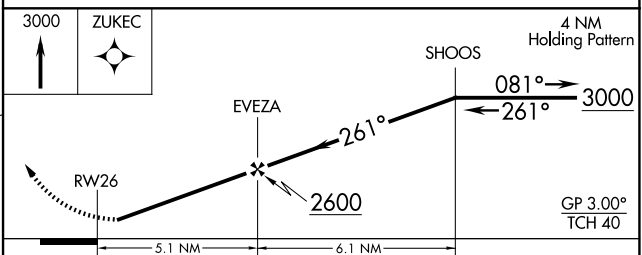
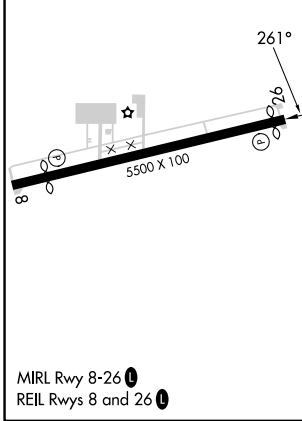
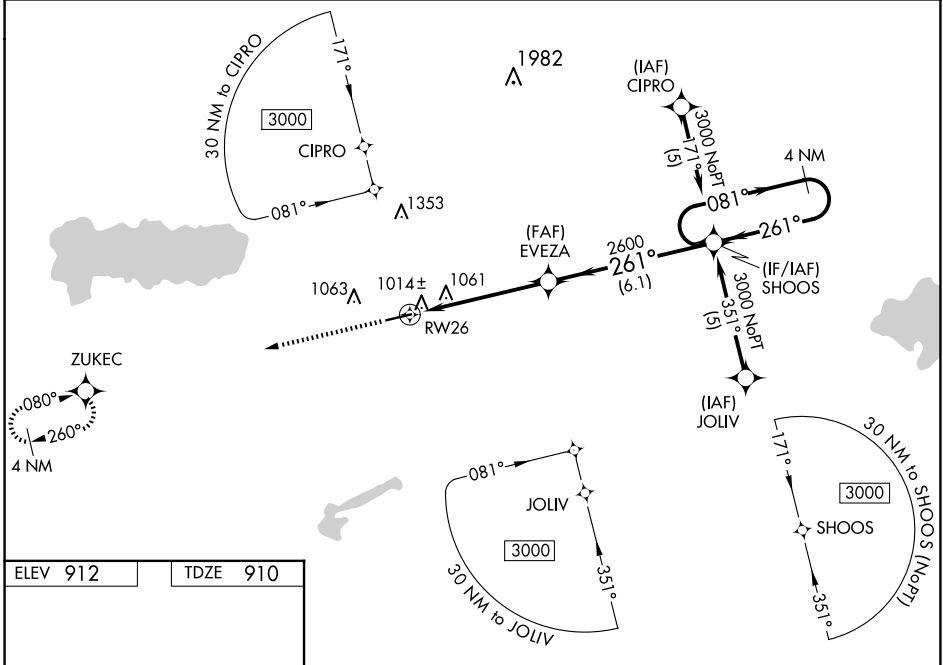
NEIL ARMSTRONG (AXV)

RNP APCH - GPS.

NA Baro-VNAV NA when using Lima altimeter setting. For uncompensated Baro-VNAV systems, LNAV/VNAV NA below -16°C or above 54°C. Rwy 26 helicopter visibility reduction below 1 SM NA. When local altimeter setting not received, use Lima altimeter setting and increase LPV DA to 1291 feet and all visibilities 1/8 SM. Increase LNAV/VNAV DA to 1324 feet and all visibilities 1/8 SM. Increase all MDAs 60 feet and LNAV visibility Cat C 1/4 SM.

MISSED APPROACH:
Climb to 3000 direct ZUKEC and hold.

AWOS-3PT 128.325	COLUMBUS APP CON 134.45 294.5	UNICOM 122.8 (CTAF)	122.7 0
----------------------------	---	-------------------------------	----------------



CATEGORY	A	B	C	D
LPV DA	1241-1 1/4	331 (400-1 1/4)		NA
LNAV/VNAV DA	1274-1 1/4	364 (400-1 1/4)		NA
LNAV MDA	1440-1	530 (600-1)	1440-1 1/2 530 (600-1 1/2)	NA

EC-2, 14 MAY 2026 to 11 JUN 2026

EC-2, 14 MAY 2026 to 11 JUN 2026