

APP CRS	Rwy Ldg	<b>2801</b>
<b>019°</b>	TDZE	<b>1116</b>
	Apt Elev	<b>1116</b>

# RNAV (GPS) RWY 2

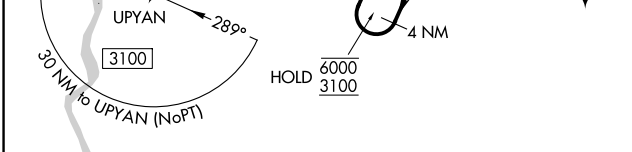
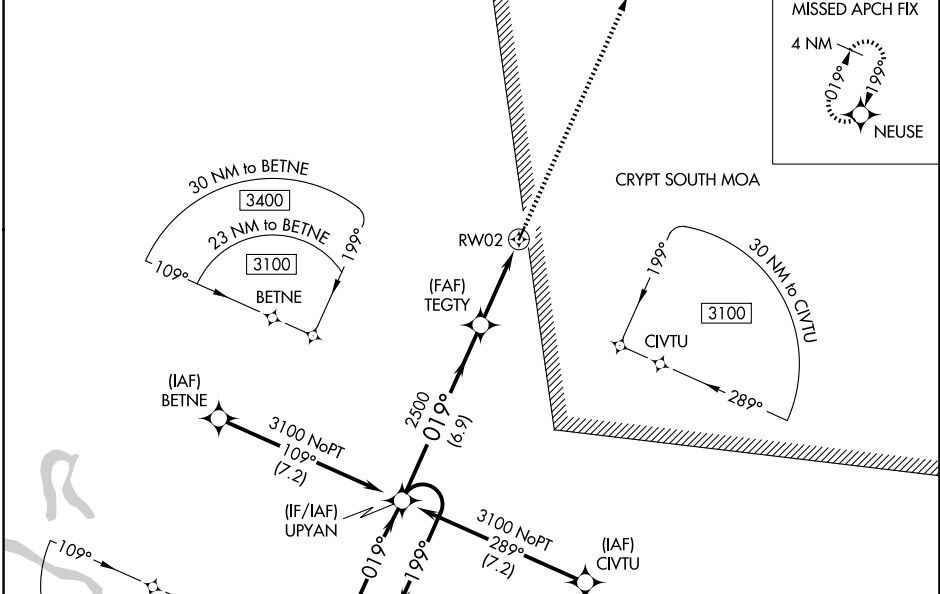
JAMES G WHITING MEML FLD (MEY)

RNP APCH - GPS.

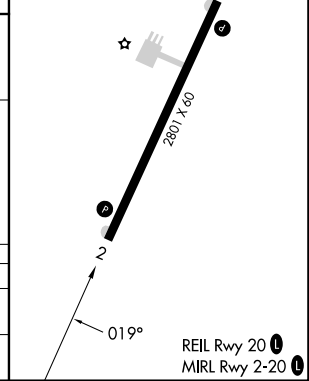
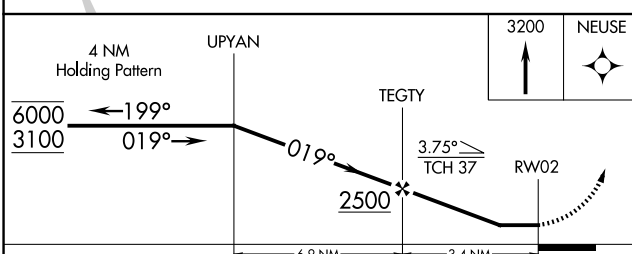
**NA** Procedure NA at night. Rwy 2 helicopter visibility reduction below 1 SM NA. Use Sioux City altimeter setting, when not received use Denison altimeter setting and increase all MDAs 20 feet and visibility LNAV Cat B ¼ SM, and visibility Circling Cat C ¼ SM.

MISSED APPROACH: Climb to 3200 direct NEUSE and hold.

SUX ASOS <b>119.45 270.8</b>	SIOUX CITY APP CON ★ <b>124.6 307.0</b>	UNICOM <b>122.8 (CTAF) 0</b>
---------------------------------	--	---------------------------------



ELEV 1116	TDZE 1116
-----------	-----------



CATEGORY	A	B	C	D
LNAV MDA	1840-1	724 (800-1)	1840-2 724 (800-2)	NA
CIRCLING	1880-1 764 (800-1)	1940-1¼ 824 (900-1¼)	1980-2½ 864 (900-2½)	NA

NC-3, 14 MAY 2026 to 11 JUN 2026

NC-3, 14 MAY 2026 to 11 JUN 2026