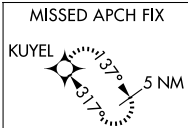
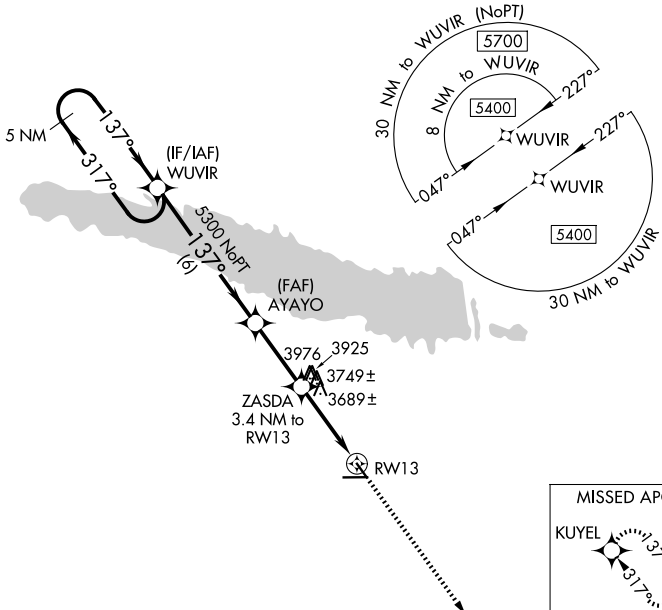


WAAS CH <b>93531</b> <b>W13A</b>	APP CRS <b>137°</b>	Rwy Ldg TDZE Apt Elev	<b>3700</b> <b>3279</b> <b>3279</b>
--	------------------------	-----------------------------	---

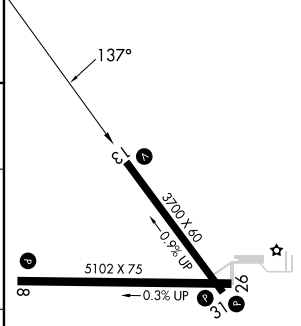
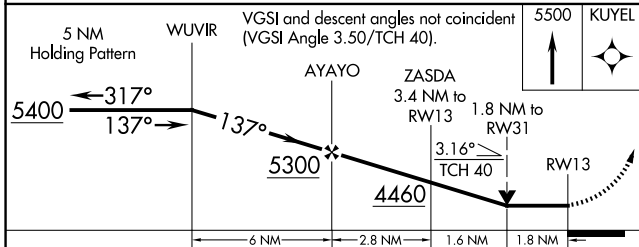
# RNAV (GPS) RWY 13

SEARLE FLD (OGA)

RNP APCH.		MISSED APPROACH: Climb to 5500 direct KUYEL and hold.
<p>▼ When local altimeter setting not received, use Imperial altimeter setting and increase all MDA 100 feet, increase LP, LNAV and Circling Cat B visibility to 1¼. VDP NA with Imperial altimeter setting.</p>		
AWOS-3 <b>121.275</b>	DENVER CENTER <b>132.7 397.85</b>	UNICOM <b>122.8 (CTAF) 0</b>



ELEV 3279	TDZE 3279
-----------	-----------



CATEGORY	A	B	C	D
LP MDA	3940-1	661 (700-1)		NA
LNAV MDA	4000-1	721 (800-1)		NA
CIRCLING	4000-1	721 (800-1)		NA

MRL Rwy 8-26 and 13-31 0

NC-2, 14 MAY 2026 to 11 JUN 2026

NC-2, 14 MAY 2026 to 11 JUN 2026