

LOC/DME I-SMA <b>109.1</b> Chan 28	APP CRS <b>170°</b>	Rwy Idg TDZE Apt Elev	<b>6008</b> <b>302</b> <b>312</b>
--	------------------------	-----------------------------	---

# LOC RWY 17

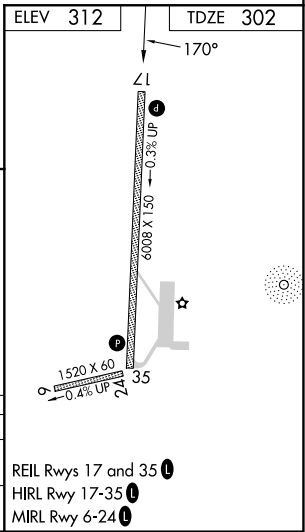
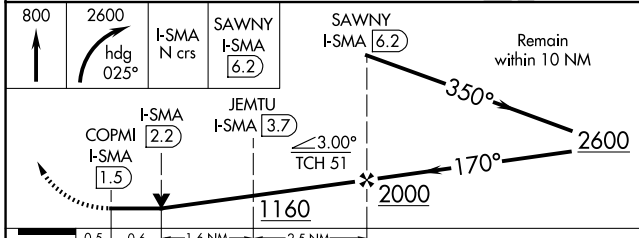
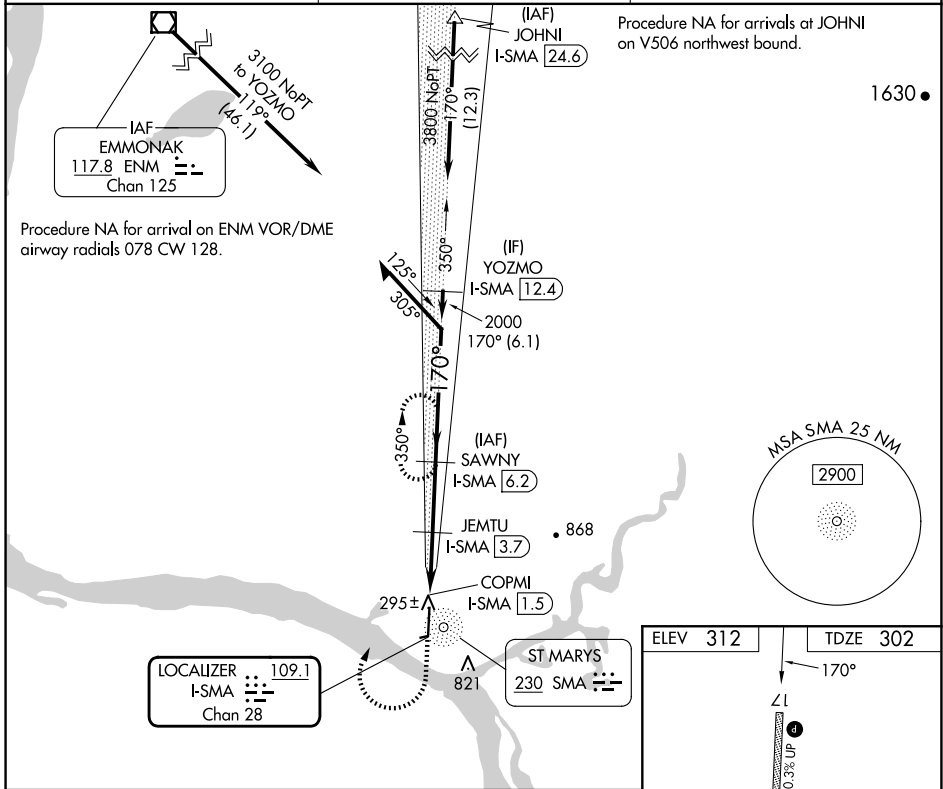
ST MARY'S (KSM)(PASM)

DME required.

**▼** Circling NA east of Rwy 17-35. Inop table does not apply to Cats A and B. For inop ALS, increase Cat C/D visibility to 1 1/8 SM.

**▲** MISSED APPROACH: Climb to 800 then climbing right turn to 2600 on heading 025° and on I-SMA north course to SAWNY/I-SMA 6.2 DME and hold, continue climb-in-hold to 2600.

AWOS-3P <b>128.7</b>	ANCHORAGE CENTER <b>124.0</b>	CTAF <b>122.3</b>
-------------------------	----------------------------------	----------------------



CATEGORY	A	B	C	D
S-17	700-1 398 (400-1)			
CIRCLING	820-1 508 (600-1)	820-1 1/2 508 (600-1 1/2)	880-2 568 (600-2)	

AK, 14 MAY 2026 to 09 JUL 2026

AK, 14 MAY 2026 to 09 JUL 2026