

WAAS CH <b>40423</b> <b>W12A</b>	APP CRS <b>126°</b>	Rwy Idg TDZE Apt Elev	<b>5704</b> <b>2458</b> <b>2458</b>
--	------------------------	-----------------------------	---

# RNAV (GPS) RWY 12

DAWSON COMMUNITY (GDV)

RNP APCH.

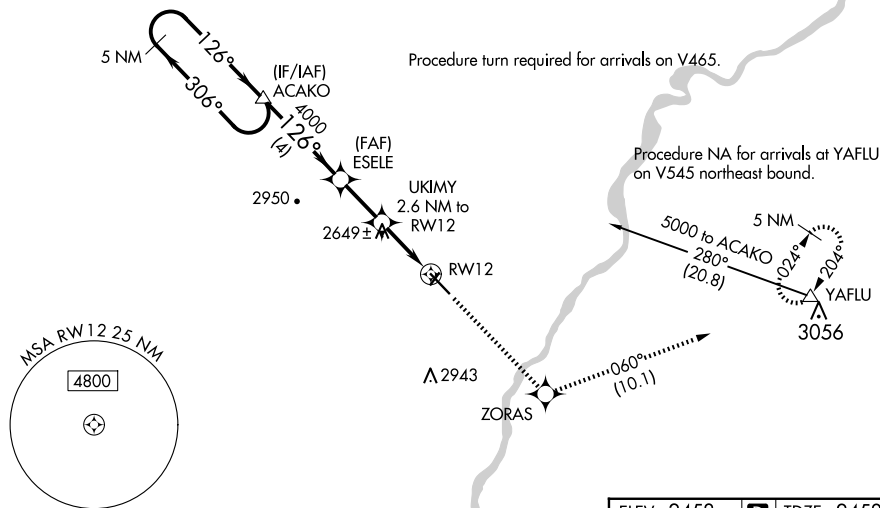
▼ For uncompensated Baro-VNAV systems, LNAV/VNAV NA below -19°C or above 28°C. When local climeter setting not received, procedure NA. Rwy 12 helicopter visibility reduction below ¼ SM NA.

MISSED APPROACH: Climb to 6000 direct ZORAS and on track 060° to YAFLU and hold, continue climb-in-hold to 6000.

AWOS-3PT  
**135.075**

SALT LAKE CENTER  
**126.85 305.2**

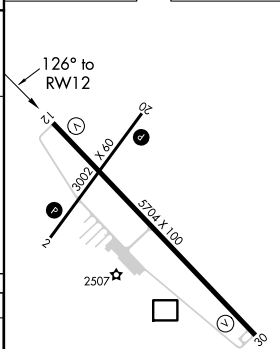
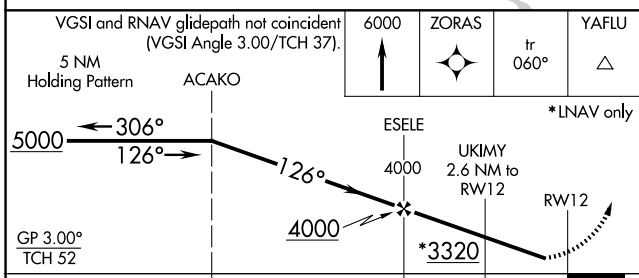
UNICOM  
**122.8 (CTAF)**



NW-1, 14 MAY 2026 to 11 JUN 2026

NW-1, 14 MAY 2026 to 11 JUN 2026

ELEV 2458 TDZE 2458



CATEGORY	A	B	C	D
LPV DA		2708-1	250 (300-1)	
LNAV/VNAV DA		2708-1	250 (300-1)	
LNAV MDA	2900-1	442 (500-1)	2900-1 <sup>3</sup> / <sub>8</sub>	442 (500-1 <sup>3</sup> / <sub>8</sub> )
CIRCLING	2900-1 442 (500-1)	2920-1 462 (500-1)	3280-2 <sup>1</sup> / <sub>2</sub> 822 (900-2 <sup>1</sup> / <sub>2</sub> )	3280-2 <sup>3</sup> / <sub>4</sub> 822 (900-2 <sup>3</sup> / <sub>4</sub> )

REIL Rws 12 and 30  
MIRL Rws 2-20 and 12-30