

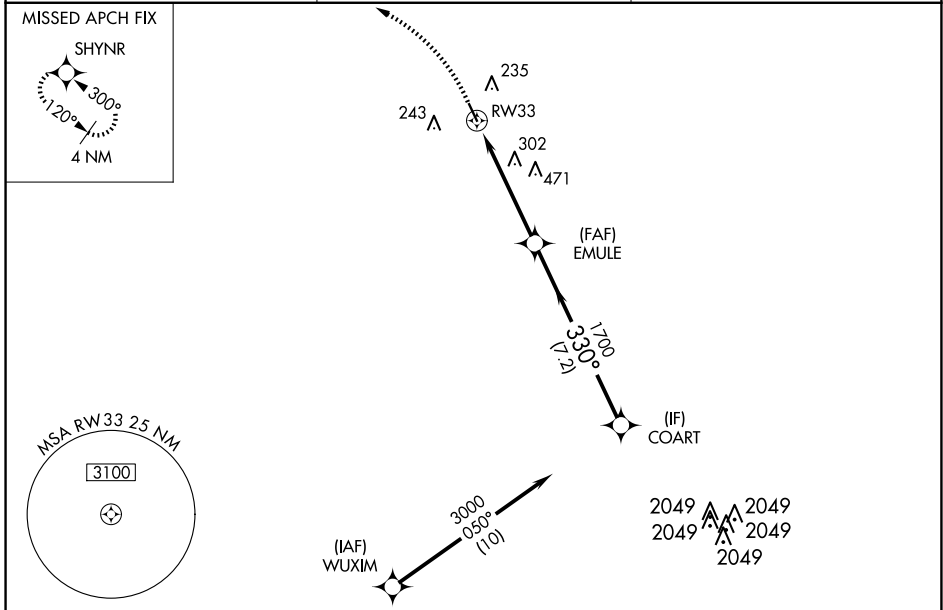
APP CRS 330°	Rwy Idg TDZE Apt Elev	3953 111 111
------------------------	-----------------------------	---

RNAV (GPS) RWY 33

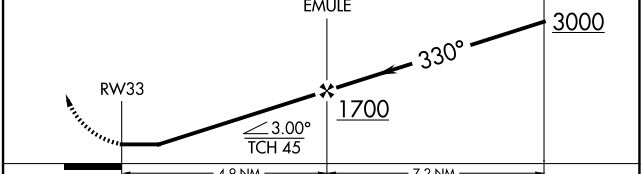
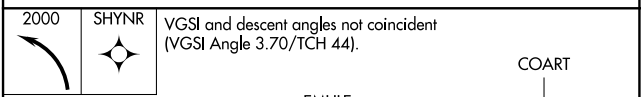
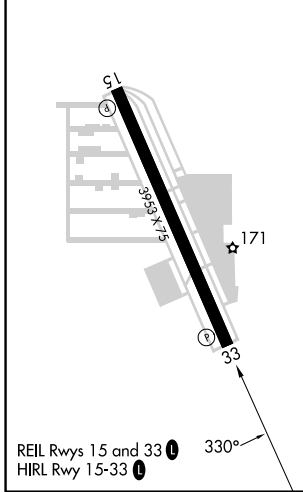
WEST HOUSTON (IWS)

RNP APCH.	MISSED APPROACH: Climbing left turn to 2000 direct SHYNR and hold.
Rwy 33 helicopter visibility reduction below 1 SM NA. Use George Bush Intcnl/Houston altimeter setting. Circling Rwy 15 NA at night.	

HOUSTON APP CON 123.8 257.7	CLNC DEL 121.15	UNICOM 123.05 (CTAF)
---------------------------------------	---------------------------	--------------------------------



ELEV 111	TDZE 111
----------	----------



CATEGORY	A	B	C	D
LNAV MDA	600-1	489 (500-1)	600-1 3/8 489 (500-1 3/8)	NA
CIRCLING	600-1 489 (500-1)	640-1 529 (600-1)	800-2 689 (700-2)	NA

SC-5, 14 MAY 2026 to 11 JUN 2026

SC-5, 14 MAY 2026 to 11 JUN 2026