

WAAS CH 82435 W13A	APP CRS 128°	Rwy Ldg TDZE Apt Elev	6503 658 658
--	------------------------	-----------------------------	---

RNAV (GPS) RWY 13

NEW BRAUNFELS NTL (B.A.Z)

RNP APCH

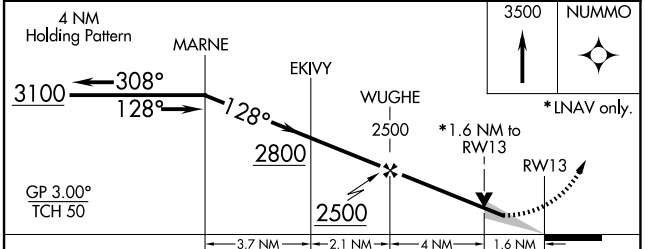
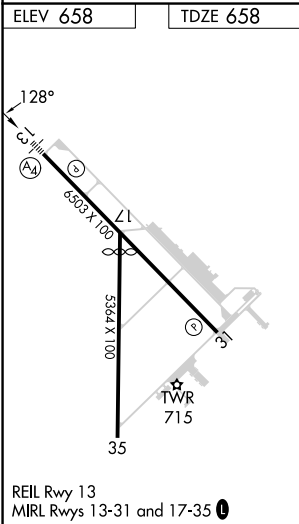
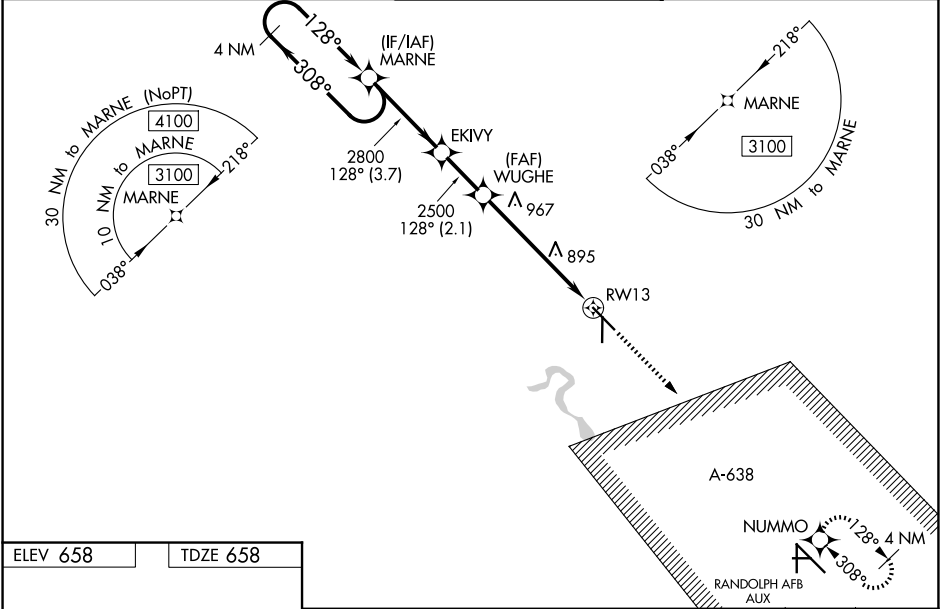
⚠ When local altimeter setting not received, use San Marcos Rgnl altimeter setting; increase LPV DA to 951 feet, LNAV/VNAV DA to 1169 feet; increase all MDAs 60 feet and visibility LNAV and Circling Cat C/D ¼ SM. For uncompensated Baro-VNAV systems, LNAV/VNAV NA below -6°C (22°F) or above 54°C (130°F). Baro-VNAV and VDP NA when using San Marcos altimeter setting. For inop ALS, increase LNAV/VNAV visibility to 1 ½ SM. Inop table does not apply to LPV all Cats and LNAV Cats A/B. For inop ALS when using San Marcos Rgnl altimeter setting, increase LPV all Cats visibility to ¾ SM and LNAV/VNAV all Cats visibility to 1 ¾ SM. When using San Marcos Rgnl altimeter setting, inop table does not apply to LNAV Cats A/B.

MALS



MISSED APPROACH:
Climb to 3500 direct NUMMO and hold, continue climb-in-hold to 3500.

ATIS 119.325	SAN ANTONIO APP CON 124.45 335.625	NEW BRAUNFELS TOWER★ 127.05 (CTAF) 0 285.4	GND CON 120.175	UNICOM 122.7
------------------------	--	---	---------------------------	------------------------



CATEGORY	A	B	C	D
LPV DA		908-¾	250 (300-¾)	
LNAV/VNAV DA		1126-1¼	468 (500-1¼)	
LNAV MDA	1220-1	562 (600-1)	1220-1¾	562 (600-1¾)
CIRCLING	1220-1 562 (600-1)	1240-1 582 (600-1)	1280-1¾ 622 (700-1¾)	1320-2 662 (700-2)

SC-3, 14 MAY 2026 to 11 JUN 2026

SC-3, 14 MAY 2026 to 11 JUN 2026