

WAAS CH 86435 W31A	APP CRS 308°	Rwy Ldg TDZE Apt Elev	6503 646 658
---------------------------------	------------------------	-----------------------------	---

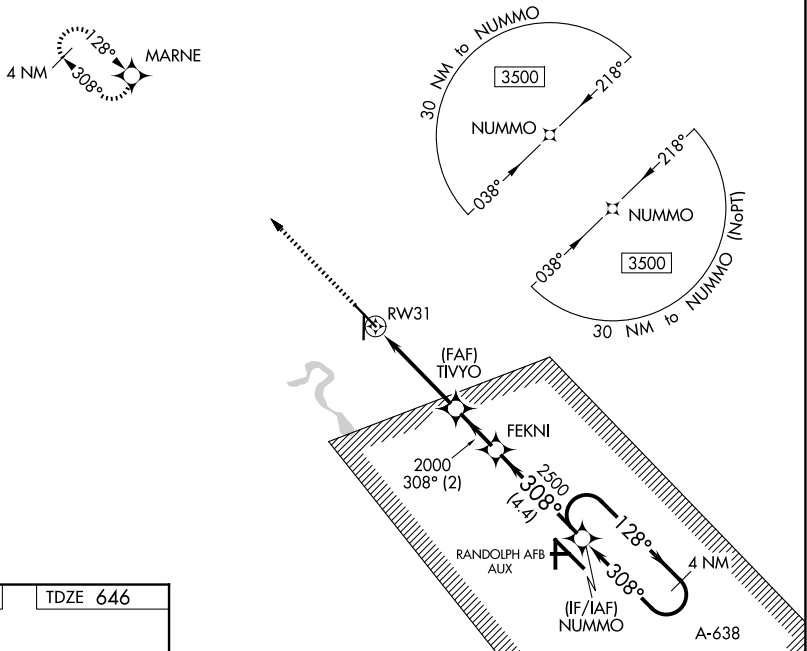
RNAV (GPS) RWY 31

NEW BRAUNFELS NTL (B.A.Z)

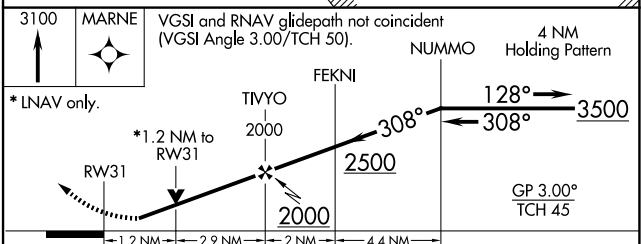
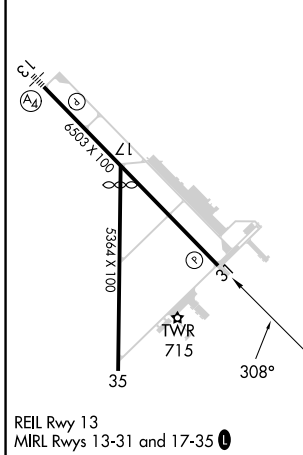
⚠ DME/DME RNP-0.3 NA. When local altimeter setting not received, use San Marcos altimeter setting and increase all DA 43 feet and all MDA 60 feet, and increase LPV all Cats, LNAV/VNAV all Cats, and Circling Cats C and D visibility ¼ mile, and LNAV Cats C and D visibility ½ mile. For uncompensated Baro-VNAV systems, LNAV/VNAV NA below -5°C (23°F) or above 54°C (130°F). Baro-VNAV and VDP NA when using San Marcos altimeter setting. Helicopter visibility reduction below ¾ SM NA.

MISSED APPROACH:
Climb to 3100 direct MARNE and hold.

ATIS 119.325	SAN ANTONIO APP CON 124.45 335.625	NEW BRAUNFELS TOWER ★ 127.05 (CTAF) 0 285.4	GND CON 120.175	UNICOM 122.7
------------------------	--	---	---------------------------	------------------------



ELEV 658	TDZE 646
----------	----------



CATEGORY	A	B	C	D
LPV DA		896-¾	250 (300-¾)	
LNAV/VNAV DA		1068-1¾	422 (500-1¾)	
LNAV MDA	1080-1	434 (500-1)	1080-1¼	434 (500-1¼)
CIRCLING	1100-1 442 (500-1)	1240-1 582 (600-1)	1280-1¾ 622 (700-1¾)	1320-2 662 (700-2)