

KILNS SIX DEPARTURE (RNAV)

SE-2, 14 MAY 2026 to 11 JUN 2026

CHARLOTTE DEP CON
120.05 257.2
ASOS
135.725
CLNC DEL
127.2

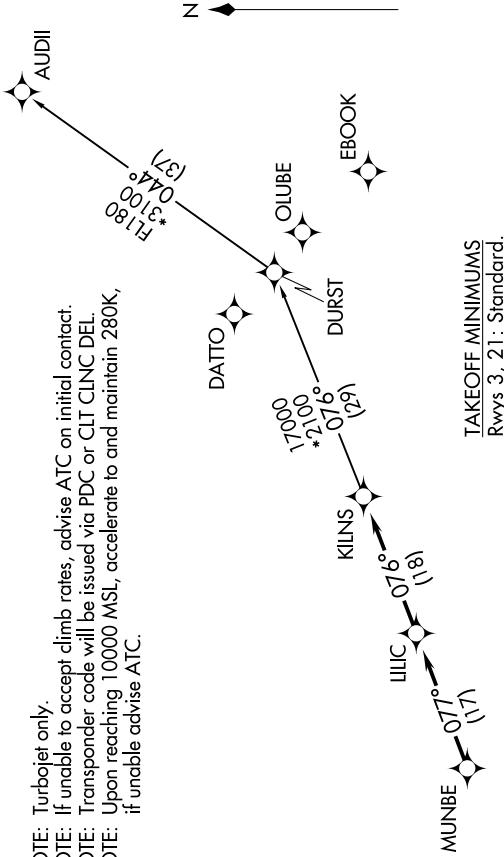
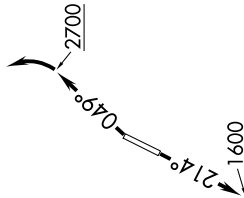
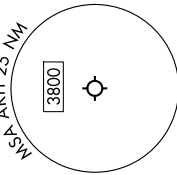
RNAV 1 - DME/DME/IRU or GPS.
RADAR required.

**TOP ALTITUDE:
3000**

NOTE: Turbojet only.

NOTE: If unable to accept climb rates, advise ATC on initial contact.
NOTE: Transponder code will be issued via PDC or CLT CLNC DEL.

NOTE: Upon reaching 10000 MSL, accelerate to and maintain 280K, if unable advise ATC.



TAKEOFF MINIMUMS
Rwys 3, 21: Standard.

NOTE: Chart not to scale.

DEPARTURE ROUTE DESCRIPTION

TAKEOFF RUNWAY 3: Climb on heading 049° to 2700 before turning left, then on heading assigned by ATC, thence. . .
TAKEOFF RUNWAY 21: Climb on heading 214° to 1600 before proceeding north, then on heading assigned by ATC, thence. . .
 . . . for RADAR vectors to MUNBE, then on depicted route to KILNS. Then on assigned transition. Maintain 3000, expect filed altitude 10 minutes after departure.

AUDI I TRANSITION (KILNS6.AUDI I)

KILNS SIX DEPARTURE (RNAV)

SE-2, 14 MAY 2026 to 11 JUN 2026