

(LILLS4.LILLS) 26134

AL-6081 (FAA)

GASTONIA MUNI (AKH)
GASTONIA, NORTH CAROLINA

LILLS FOUR DEPARTURE (RNAV)

CHARLOTTE DEP CON
120.05 257.2
ASOS
135.725
CLNC DEL
127.2

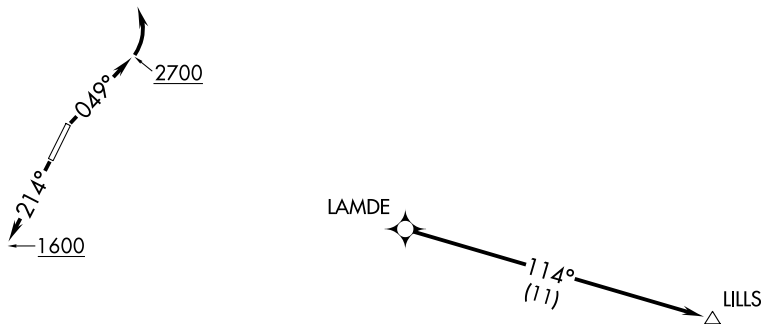
RNAV 1 - DME/DME/IRU or GPS.

RADAR required.

TOP ALTITUDE:
3000

TAKEOFF MINIMUMS

Rwys 3, 21: Standard.

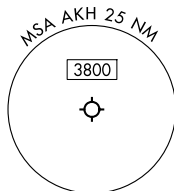


NOTE: Turbojet only.

NOTE: Transponder code will be issued via PDC or CLT CLNC DEL.

NOTE: If unable to accept climb rates, advise ATC on initial contact.

NOTE: Upon reaching 10000 MSL, accelerate to and maintain 280K, if unable advise ATC.



NOTE: Chart not to scale.



DEPARTURE ROUTE DESCRIPTION

TAKEOFF RUNWAY 3: Climb on heading 049° to 2700 before turning left, then on heading assigned by ATC, thence. . .

TAKEOFF RUNWAY 21: Climb on heading 214° to 1600 before proceeding north, then on heading assigned by ATC, thence. . .

. . .for RADAR vectors to LAMDE, then on depicted route to LILLS. Maintain 3000. Expect filed altitude 10 minutes after departure.

LILLS FOUR DEPARTURE (RNAV)

(LILLS4.LILLS) 14MAY26

GASTONIA, NORTH CAROLINA
GASTONIA MUNI (AKH)

SE-2, 14 MAY 2026 to 11 JUN 2026

SE-2, 14 MAY 2026 to 11 JUN 2026