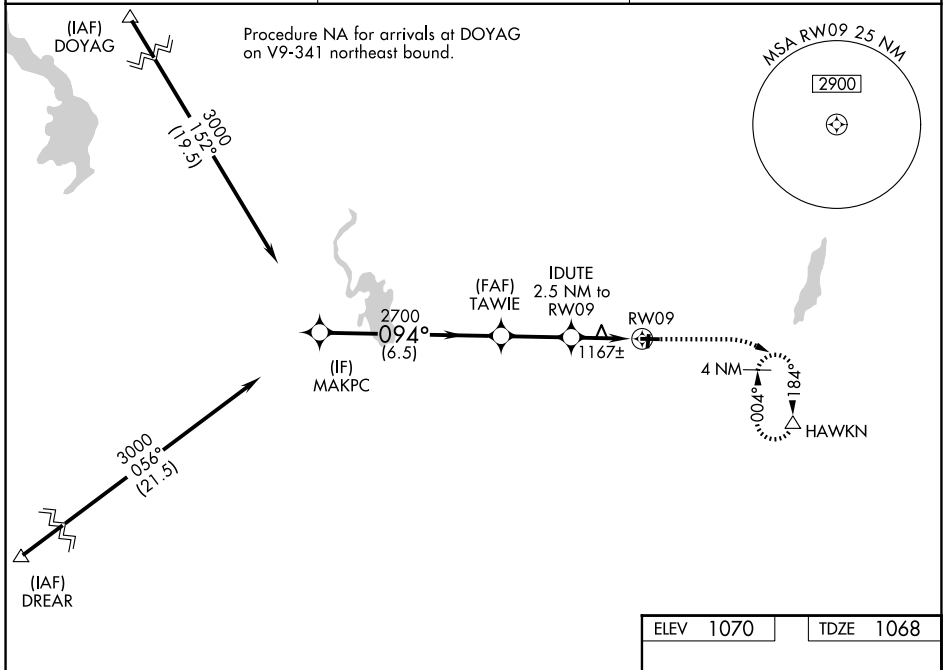


WAAS CH 42743 W09A	APP CRS 094°	Rwy Ldg TDZE Apf Elev	3401 1068 1070
--	------------------------	-----------------------------	---

RNAV (GPS) RWY 9

HARTFORD MUNI (HXF)

RNP APCH.		MISSED APPROACH: Climb to 1700 then climbing right turn to 3000 direct HAWKN and hold, continue climb-in-hold to 3000.
<p>▼ Circling NA to Rwy 18 and 36.</p> <p>▲ NA Baro-VNAV NA.</p> <p>Use Westbend altimeter setting.</p>		
ETB AWOS-3 120.0	MILWAUKEE APP CON 125.35 307.0	UNICOM 123.0 (CTAF) 0



EC-3, 14 MAY 2026 to 11 JUN 2026

EC-3, 14 MAY 2026 to 11 JUN 2026

ELEV 1070		TDZE 1068	
<p>MAKPC 3000</p> <p>GP 3.00° TCH 40</p> <p>094°</p> <p>2700</p> <p>*1900</p> <p>6.5 NM</p>		<p>1700</p> <p>3000</p> <p>HAWKN</p> <p>*LNAV only.</p>	
<p>TAWIE 2700</p> <p>IDUTE 2.5 NM to RW09</p> <p>2.5 NM</p>		<p>RW09</p> <p>2.5 NM</p>	
CATEGORY	A	B	C
LPV DA	1372-7/8	304 (400-7/8)	NA
LNAV/VNAV DA	1372-7/8	304 (400-7/8)	NA
LNAV MDA	1480-1	412 (500-1)	NA
CIRCLING	1560-1	490 (500-1)	NA

