

WAAS CH 58342 W06A	APP CRS 058°	Rwy Ldg TDZE Apt Elev	4602 3548 3548
--	------------------------	-----------------------------	---

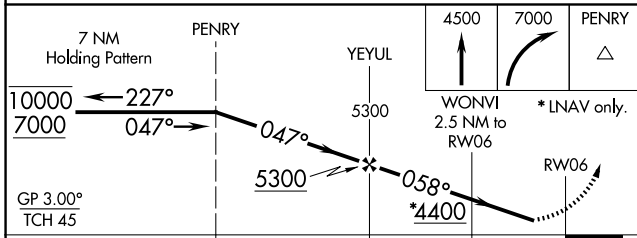
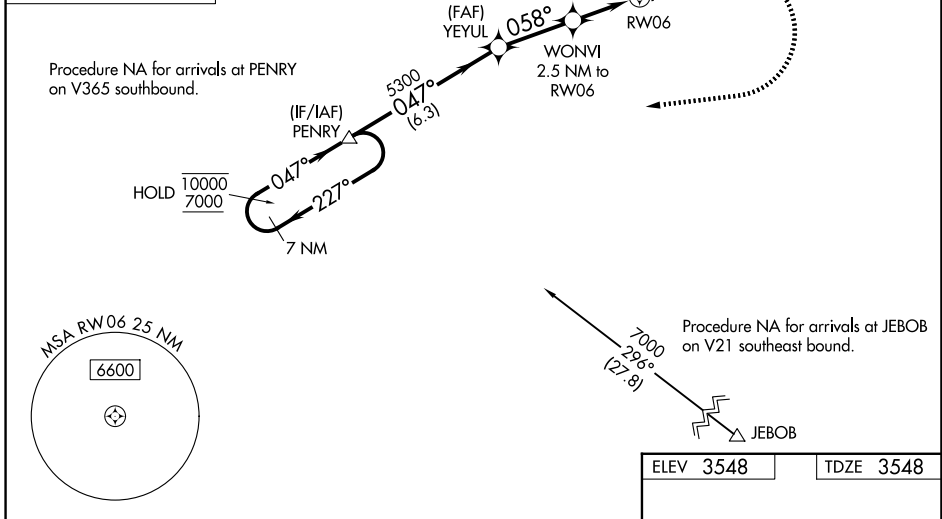
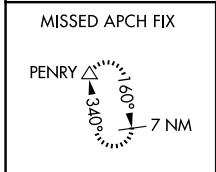
RNAV (GPS) RWY 6

CONRAD (S01)

RNP APCH. MISSED APPROACH: Climb to 4500, then climbing right turn to 7000 direct PENRY and hold, continue climb in hold to 7000.

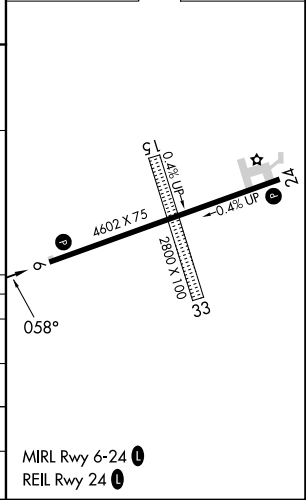
⚠️ NA Circling NA to Rwsy 15 and 33. Rwy 6 helicopter visibility reduction below 3/4 SM NA. Baro-VNAV NA. For uncompensated Baro-VNAV systems, LNAV/VNAV NA below -22°C or above 53°C. Use Cut Bank altimeter setting.

CTB ASOS 119.025	SALT LAKE CITY CENTER 133.4 285.4	AUNICOM 122.8 (CTAF) 0
----------------------------	---	----------------------------------



ELEV 3548	TDZE 3548
-----------	-----------

CATEGORY	A	B	C	D
LPV DA		3915-1	367 (400-1)	
LNAV/VNAV DA		4266-2	718 (800-2)	
LNAV MDA	4220-1	672 (700-1)	4220-1 7/8	672 (700-1 1/8)
CIRCLING	4220-1 672 (700-1)	4340-1 792 (800-1)	4460-2 3/4 912 (1000-2 3/4)	4620-3 1072 (1100-3)



NW-1, 14 MAY 2026 to 11 JUN 2026

NW-1, 14 MAY 2026 to 11 JUN 2026