

VOR/DME MCW <b>114.9</b> Chan <b>96</b>	APP CRS <b>297°</b>	Rwy Ldg TDZE Apt Elev <b>N/A</b> <b>N/A</b> <b>1229</b>
---	------------------------	---

# VOR-A

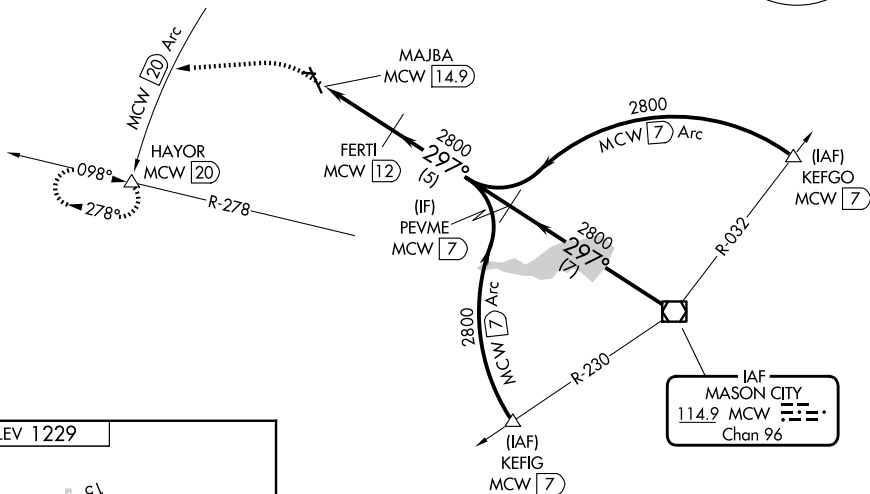
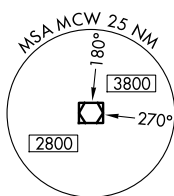
FOREST CITY MUNI/TRIMBLE FLD (FXY)

DME required.

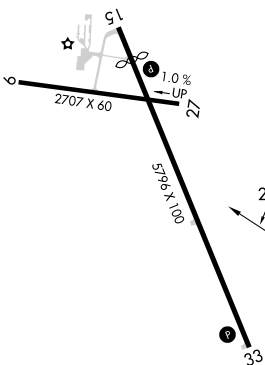
When local altimeter setting not received use Mason City altimeter setting and increase all MDA 40 feet. Circling to Rwy 9, 27 33 NA at night.

MISSED APPROACH: Climb to 3000 on heading 260° to MCW 20 DME Arc and on MCW 20 DME Arc counterclockwise to HAYOR/20 DME and hold.

AWOS-3 <b>123.925</b>	MINNEAPOLIS CENTER <b>127.3 257.675</b>	UNICOM <b>122.8 (CTAF)</b>
--------------------------	--	-------------------------------



ELEV 1229



REIL Rws 15 and 33  
MIRL Rws 9-27 and 15-33

Procedure NA for arrivals on MCW VOR/DME airway radials 278 CW 343.

3000 ↑ hdg 260°	MCW 20 Arc counter-clockwise	HAYOR △	FERTI MCW 12	PEVME MCW 7	MCW VOR/DME
MAJBA MCW 14.9		2800		2800	297° 2800
2.9 NM		5 NM		7 NM	
CATEGORY	A	B	C	D	
CIRCLING	1680-1 451 (500-1)	1760-1 531 (600-1)	NA		

NC-3, 14 MAY 2026 to 11 JUN 2026

NC-3, 14 MAY 2026 to 11 JUN 2026