

WAAS CH 53740 W20A	APP CRS 201°	Rwy Ldg 4700 TDZE 117 Apt Elev 117
--	------------------------	---

RNAV (GPS) RWY 20

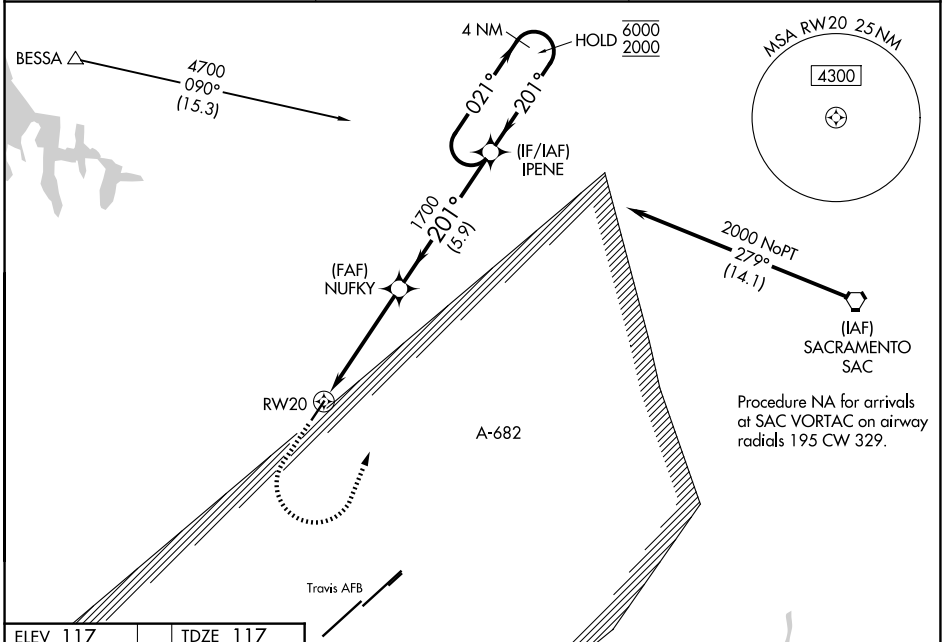
NUT TREE (VCB)

RNP APCH.

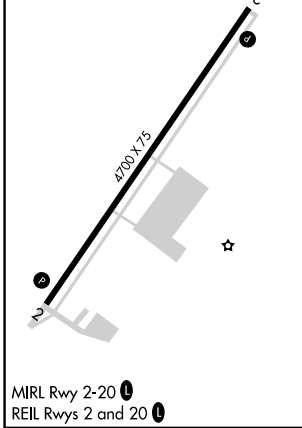
⚠ Circling NA west of Rwy 2-20. Circling Rwy 2 NA at night.
⚠ For uncompensated Baro-VNAV systems, LNAV/VNAV NA below -3°C or above 54°C.

MISSED APPROACH: (Do not exceed 220K until IPENE) Climb to 580 then climbing left turn to 2100 direct IPENE and hold.
Missed approach requires minimum climb of 229 feet per NM to 1300.

ASOS 134.75	TRAVIS APP CON 128.4 281.45	CTAF 122.85
-----------------------	---------------------------------------	-----------------------



ELEV 117	TDZE 117
----------	----------



580	2100	IPENE	VGSI and RNAV glidepath not coincident (VGSI Angle 3.75/TCH 27).	IPENE	4 NM Holding Pattern
*LNAV only.			NUFKY	1700	201° → 6000 ← 201° 2000
*1.5 NM to RW20			1700	201°	GP 3.00° TCH 40
1.5 NM			3.4 NM	5.9 NM	

CATEGORY	A	B	C	D
LPV DA#		367- ³ / ₄	250 (300- ³ / ₄)	
LPV DA		384- ⁷ / ₈	267 (300- ⁷ / ₈)	
LNAV/VNAV DA		614-1 ³ / ₈	497 (500-1 ³ / ₈)	
LNAV MDA	720-1	603 (700-1)	720-1 ³ / ₄	603 (700-1 ³ / ₄)
CIRCLING	720-1	603 (700-1)	960-2 ¹ / ₂ 843 (900-2 ¹ / ₂)	1480-3 1363 (1400-3)

SW-2, 14 MAY 2026 to 11 JUN 2026

SW-2, 14 MAY 2026 to 11 JUN 2026