

WAAS CH <b>99727</b> <b>W28A</b>	APP CRS <b>277°</b>	Rwy Ldg TDZE Apt Elev	<b>4004</b> <b>637</b> <b>640</b>
--	------------------------	-----------------------------	---

# RNAV (GPS) RWY 28

CHEBOYGAN COUNTY (SLH)

RNP APCH.

**▼** Night landing Rwy 17, 35 NA. Baro-VNAV NA when using Pellston altimeter setting. For uncompensated Baro-VNAV systems, LNAV/VNAV NA below -16°C (4°F) or above 54°C (130°F). Helicopter visibility reduction below 3/4 SM NA. When local altimeter setting not received, use Pellston altimeter setting; increase all DA 41 feet and all MDA 60 feet and increase LNAV/VNAV all Cats visibility 1/4 SM and LNAV Cat C visibility 1/8 SM.

**MISSED APPROACH:** Climb to 2600 direct CATAP and on track 282° to JATRA and hold.

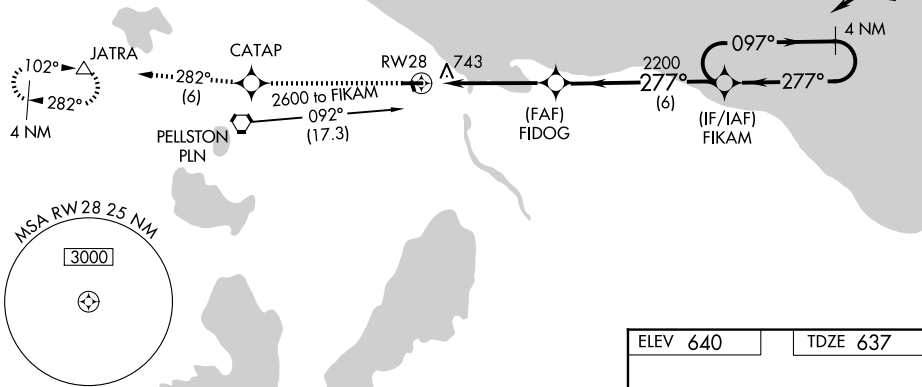
AWOS-3P  
**118.175**

MINNEAPOLIS CENTER  
**134.6 354.05**

UNICOM  
**122.8 (CTAF) 0**

Procedure NA for arrivals on PLN VORTAC airway radials 023 CW 170.

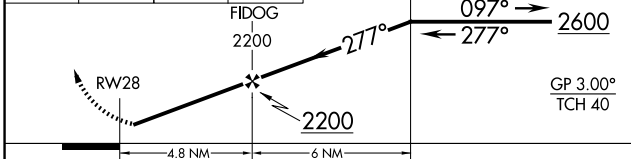
Procedure NA for arrivals at REEFY on V45 northbound.



EC-1, 14 MAY 2026 to 11 JUN 2026

EC-1, 14 MAY 2026 to 11 JUN 2026

2600	CATAP	tr 282°	JATRA	VGSI and RNAV glidepath not coincident (VGSI Angle 4.00/TCH 25). 4 NM Holding Pattern
------	-------	---------	-------	---



ELEV 640	TDZE 637
----------	----------

Diagram of RWY 28 showing runway width (4004 x 75), slope (0.3% UP), and other details. Includes a 35° heading and a 1874 x 60 detail.

REIL Rwy 10 and 28 0  
MIRL Rwy 10-28 and 17-35 0

CATEGORY	A	B	C	D
LPV DA		887-1 250 (300-1)		NA
LNAV/VNAV DA		953-1 316 (400-1)		NA
LNAV MDA	1060-1	423 (500-1)	1060-1 1/4 423 (500-1 1/4)	NA
CIRCLING	1140-1	500 (500-1)	1140-1 1/2 500 (500-1 1/2)	NA