

WAAS CH <b>77809</b> <b>W16A</b>	APP CRS <b>163°</b>	Rwy Ldg <b>4301</b> TDZE <b>1803</b> Apt Elev <b>1803</b>
--	------------------------	---

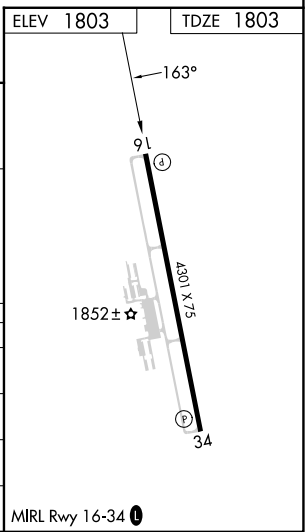
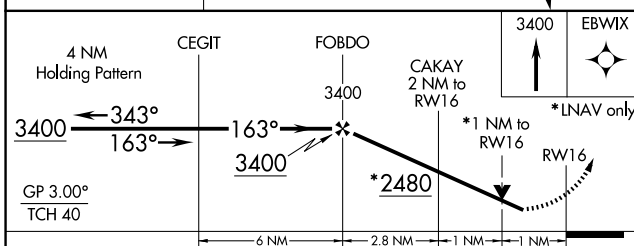
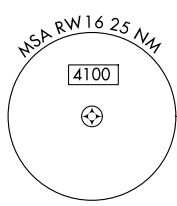
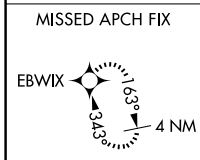
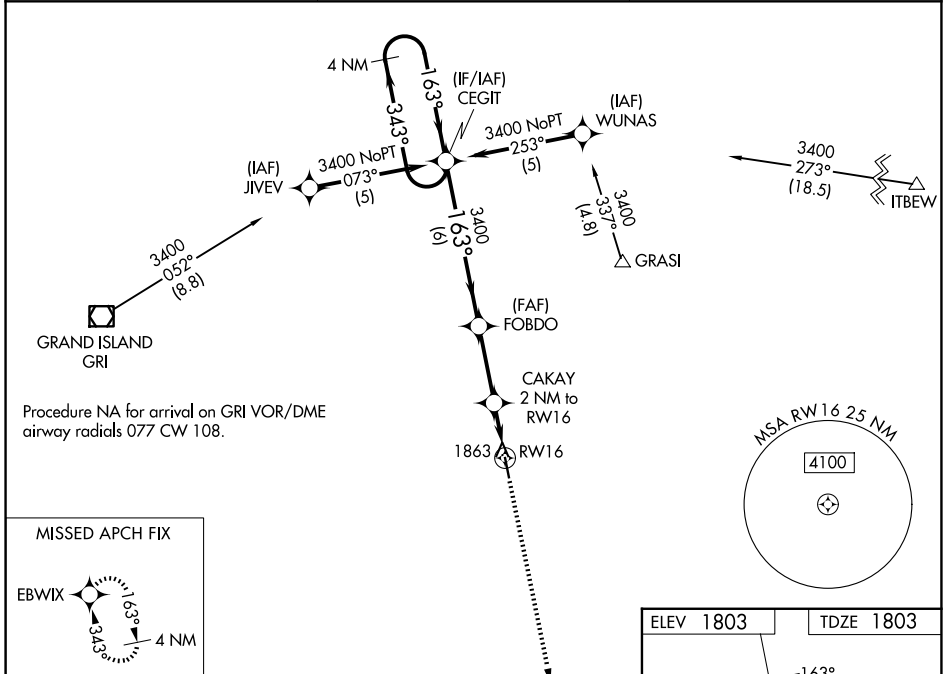
# RNAV (GPS) RWY 16

AURORA MUNI/AL POTTER FLD (AUH)

**⚠** Baro-VNAV NA when using Grand Island altimeter setting. For uncompensated Baro-VNAV systems, LNAV/VNAV NA below -18°C (0°F) or above 54°C (130°F). DME/DME RNP-0.3 NA. Visibility reduction by helicopters NA. When local altimeter setting not received, use Grand Island altimeter setting and increase all DA 41 feet and all MDA 60 feet and LPV all Cts visibility ¼ mile. VDP NA when using Grand Island altimeter setting.

**MISSED APPROACH:**  
Climb to 3400 direct EBWIX and hold.

AWOS-3 <b>121.225</b>	MINNEAPOLIS CENTER <b>119.4 278.8</b>	UNICOM <b>122.8 (CTAF) 0</b>
--------------------------	--	---------------------------------



CATEGORY	A	B	C	D
LPV DA	2102-1	299 (300-1)		NA
LNAV/VNAV DA	2133-1¼	330 (400-1¼)		NA
LNAV MDA	2160-1	357 (400-1)		NA
CIRCLING	2300-1 497 (500-1)	2340-1 537 (600-1)		NA

NC-2, 14 MAY 2026 to 11 JUN 2026

NC-2, 14 MAY 2026 to 11 JUN 2026