

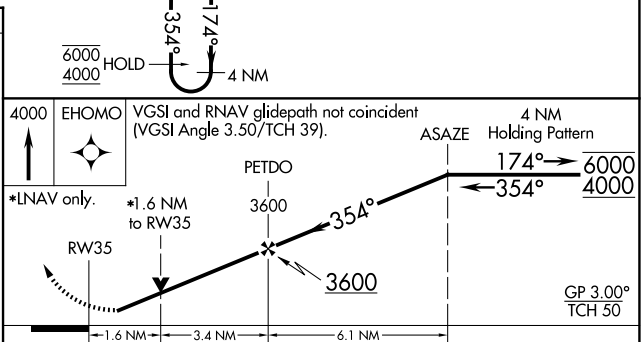
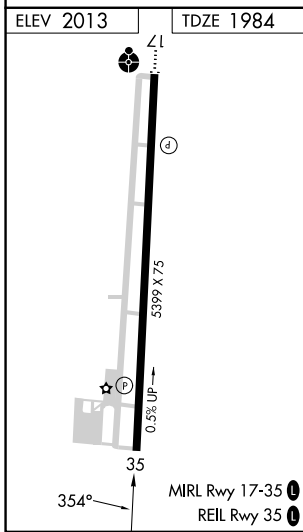
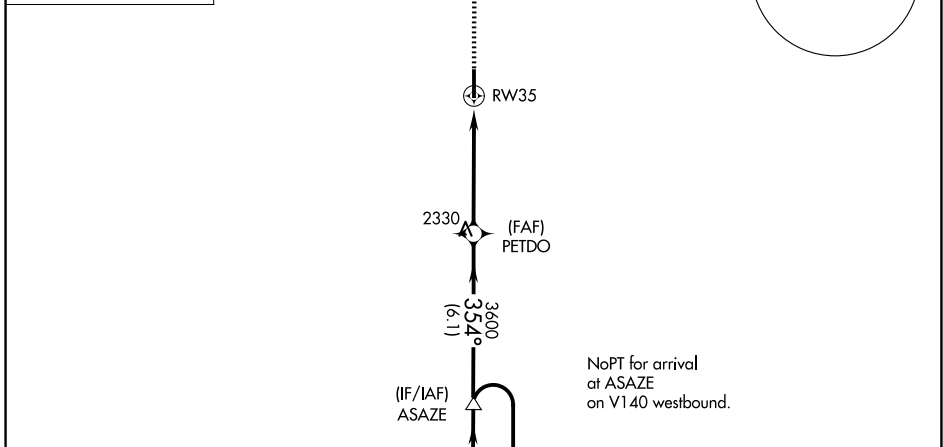
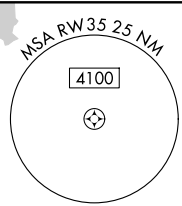
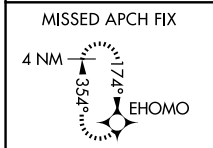
WAAS CH 53508 W35A	APP CRS 354°	Rwy Ldg TDZE 1984 Apt Elev 2013
--	------------------------	---

RNAV (GPS) RWY 35

ELK CITY RGNL BUSINESS (ELK)

RNP APCH.	MISSED APPROACH: Climb to 4000 direct EHOMO and hold.
<p>▼ Rwy 35 helicopter visibility reduction below 3/4 SM NA. ▲ For uncompensated Baro-VNAV systems, LNAV/VNAV NA below -18°C or above 54°C.</p>	

AWOS-3 118.225	FORT WORTH CENTER 128.4 269.37	UNICOM 122.8 (CTAF) 0
--------------------------	--	---------------------------------



CATEGORY	A	B	C	D
LPV DA		2234-7/8	250 (300-7/8)	
LNAV/VNAV DA		2377-13/8	393 (400-13/8)	
LNAV MDA	2640-1	656 (700-1)	2640-1 7/8	656 (700-1 7/8)
CIRCLING	2640-1 627 (700-1)	2680-1 667 (700-1)	2680-1 3/4 667 (700-1 3/4)	2940-3 927 (1000-3)

SC-1, 14 MAY 2026 to 11 JUN 2026

SC-1, 14 MAY 2026 to 11 JUN 2026