

APP CRS	Rwy Ldg	<b>3800</b>
<b>180°</b>	TDZE	<b>437</b>
	Apt Elev	<b>437</b>

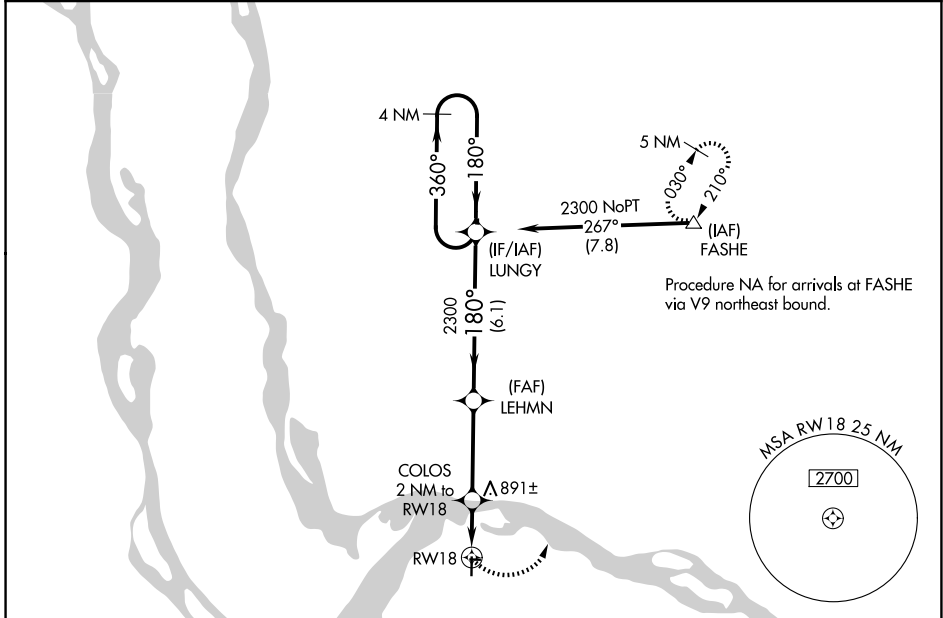
# RNAV (GPS) RWY 18

ST CHARLES COUNTY RGNL/SMARTT FLD (S/E/T)

**⚠** DME/DME RNP-0.3 NA. When local altimeter setting not received, use St Louis Lambert Intl altimeter setting and increase all MDAs 60 feet; increase visibility Cat C ¼ SM. VDP NA with St Louis Lambert Intl altimeter setting.

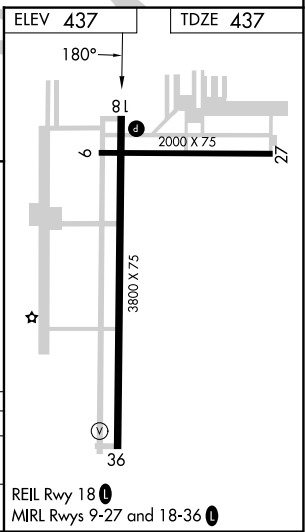
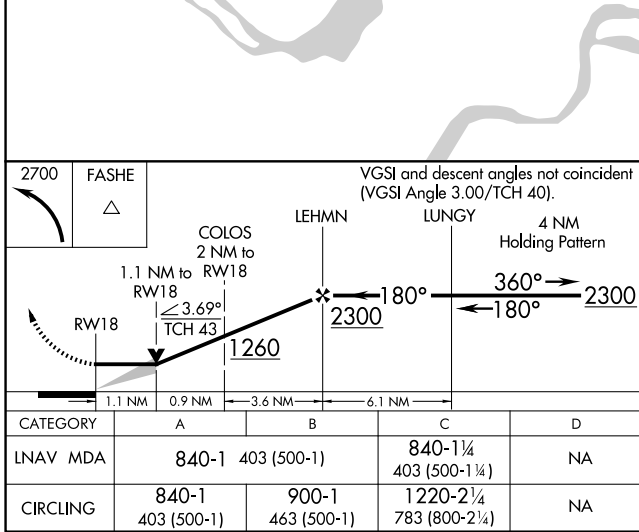
**⚠** MISSED APPROACH: Climbing left turn to 2700 direct FASHE and hold.

ASOS <b>118.075</b>	ST. LOUIS APP CON <b>124.2 353.9</b>	CLNC DEL <b>121.6</b>	UNICOM <b>122.7 (CTAF)</b> <b>📻</b>
------------------------	---	--------------------------	--



NC-3, 14 MAY 2026 to 11 JUN 2026

NC-3, 14 MAY 2026 to 11 JUN 2026



REIL Rwy 18 **📻**  
MIRL Rwys 9-27 and 18-36 **📻**