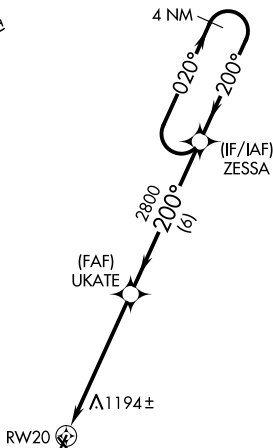
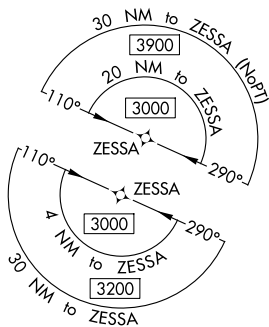


WAAS CH <b>90541</b> <b>W20A</b>	APP CRS <b>200°</b>	Rwy Ldg TDZE Apt Elev	<b>5002</b> <b>995</b> <b>996</b>
--	------------------------	-----------------------------	---

# RNAV (GPS) RWY 20

SCHENCK FLD (ICL)

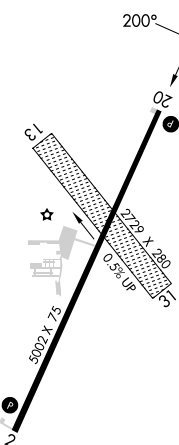
RNP APCH - GPS.		MISSED APPROACH: Climb to 3000 direct JOGOL and hold.
<p>▼ For uncompensated Baro-VNAV systems, LNAV/VNAV NA below -16°C (4°F) or above 54°C (130°F). Circling NA west of Rwy 2-20. Circling NA to Rwys 13 and 31. Rwy 20 helicopter visibility reduction below ¾ SM NA.</p> <p>▲</p>		
AWOS-3 <b>132.025</b>	MINNEAPOLIS CENTER <b>119.6 290.4</b>	UNICOM <b>122.8 (CTAF) 0</b>



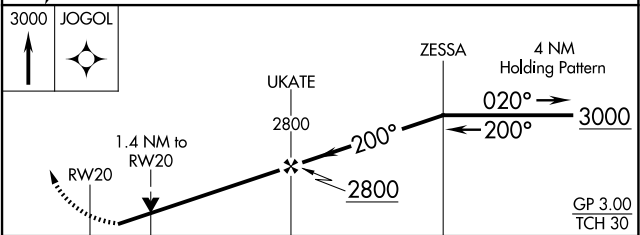
MISSED APCH FIX



ELEV 996	TDZE 995
----------	----------



REIL Rwy 20  
MIRL Rwy 2-20



CATEGORY	A	B	C	D
LPV DA	1261-1 266 (300-1)			
LNAV/VNAV DA	1489-1 3/8 494 (500-1 3/8)			
LNAV MDA	1460-1	465 (500-1)	1460-1 3/8	465 (500-1 3/8)
CIRCLING	1540-1 544 (600-1)	1720-1 724 (800-1)	1780-2 1/4 784 (800-2 1/4)	1780-2 1/2 784 (800-2 1/2)

NC-3, 14 MAY 2026 to 11 JUN 2026

NC-3, 14 MAY 2026 to 11 JUN 2026