

(CHIEF9.MCI) 25051
CHIEF NINE DEPARTURE

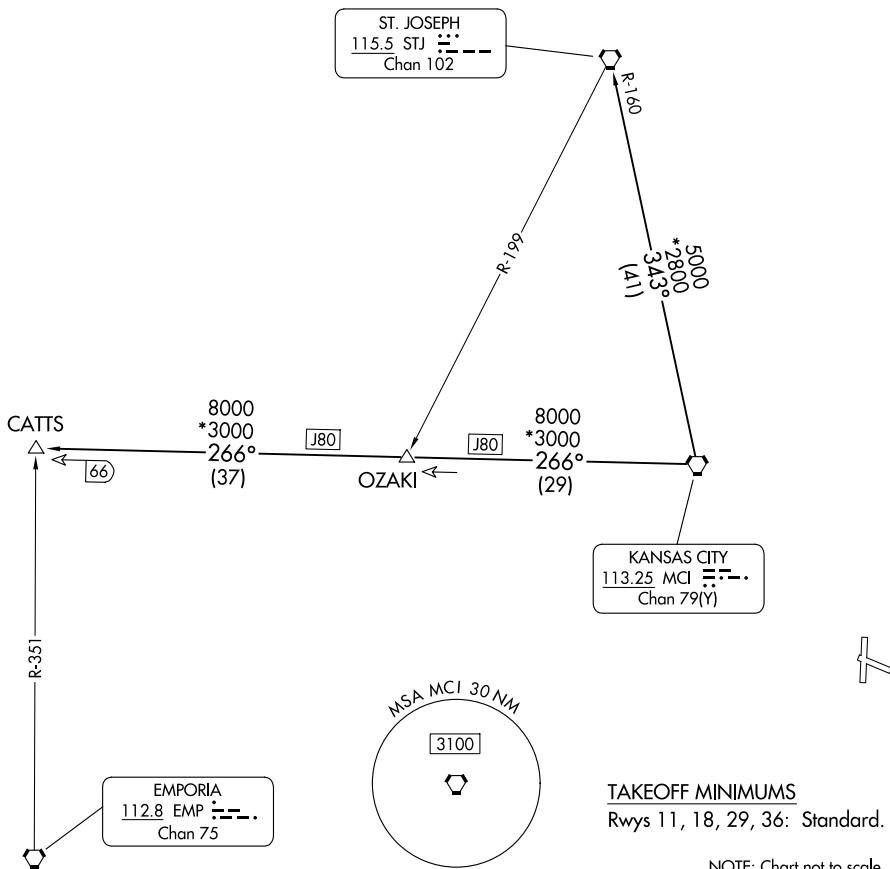
AL-6104 (FAA)

KANSAS CITY/LEE'S SUMMIT RGNL (LX'T)
 LEE'S SUMMIT, MISSOURI

**TOP ALTITUDE:
 10000**

RADAR required.

KANSAS CITY DEP CON
 118.4 307.35
 CLNC DEL
 118.45



NC-3, 14 MAY 2026 to 11 JUN 2026

NC-3, 14 MAY 2026 to 11 JUN 2026



DEPARTURE ROUTE DESCRIPTION

TAKEOFF ALL RUNWAYS: Climb on assigned heading for RADAR vectors to appropriate route. Maintain 10000 or as assigned by ATC, expect filed altitude 10 minutes after departure.

CATTs TRANSITION (CHIEF9.CATTs): From over MCI VORTAC on MCI R-266 to CATTs.

ST. JOSEPH TRANSITION (CHIEF9.STJ): From over MCI VORTAC on MCI R-343 and STJ R-160 to STJ VORTAC.

CHIEF NINE DEPARTURE
 (CHIEF9.MCI) 05OCT23

LEE'S SUMMIT, MISSOURI
 KANSAS CITY/LEE'S SUMMIT RGNL (LX'T)