

WAAS CH 82204 W18A	APP CRS 181°	Rwy Ldg TDZE Apt Elev	5501 999 1004
--	------------------------	-----------------------------	--

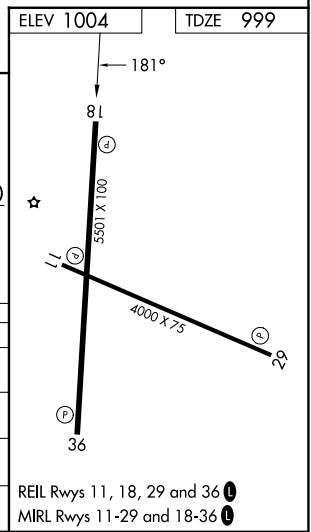
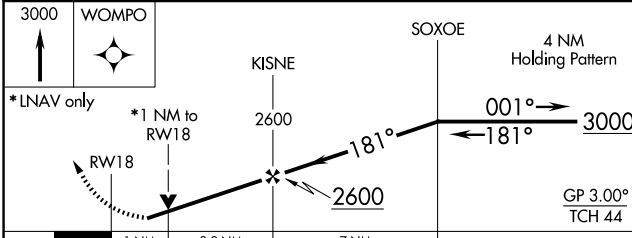
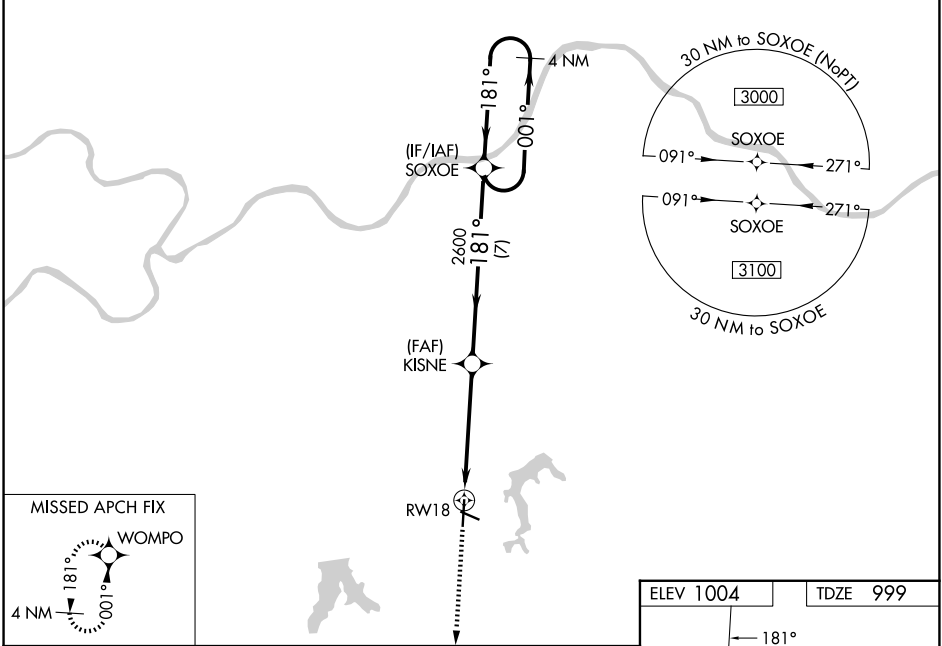
RNAV (GPS) RWY 18

KANSAS CITY/LEE'S SUMMIT RGNL (LX'T)

⚠ For uncompensated Baro-VNAV systems, LNAV/VNAV NA below -17°C (2°F) or above 54°C (130°F).
⚠ Rwy 18 helicopter visibility reduction below ¾ SM NA. DME/DME RNP-0.3 NA. Baro-VNAV and VDP NA when using Kansas City Downtown/Wheeler Fld altimeter setting. When local altimeter setting not received, use Kansas City Downtown/Wheeler Fld altimeter setting: increase LPV DA to 1317 feet and all visibilities ½ SM; increase LNAV/VNAV DA to 1434 feet and all visibilities ¼ SM; increase all MDA 80 feet and LNAV visibility Cat C and D ¾ SM, Circling Cats C and D ¼ SM.

MISSED APPROACH:
Climb to 3000 direct WOMPO and hold.

ASOS 124.175	KANSAS CITY APP CON 118.4 307.35	UNICOM 122.8 (CTAF) 0
------------------------	--	---------------------------------



CATEGORY	A	B	C	D
LPV DA		1249-¾	250 (300-¾)	
LNAV/VNAV DA		1366-1	367 (400-1)	
LNAV MDA		1360-1	361 (400-1)	
CIRCLING	1440-1 436 (500-1)	1540-1 536 (600-1)	1780-2¼ 776 (800-2¼)	1780-2½ 776 (800-2½)

REIL Rwy 11, 18, 29 and 36 **0**
MIRL Rwy 11-29 and 18-36 **0**

NC-3, 14 MAY 2026 to 11 JUN 2026

NC-3, 14 MAY 2026 to 11 JUN 2026