

VORTAC ANX 115.15 Chan 98(Y)	APP CRS 229°	Rwy Ldg TDZE Apt Elev N/A 1004
--	------------------------	--

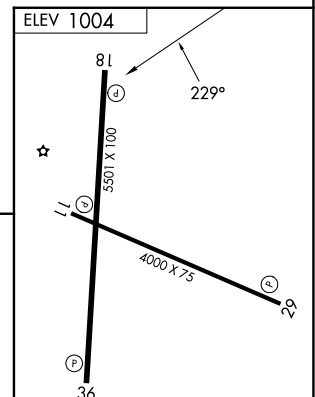
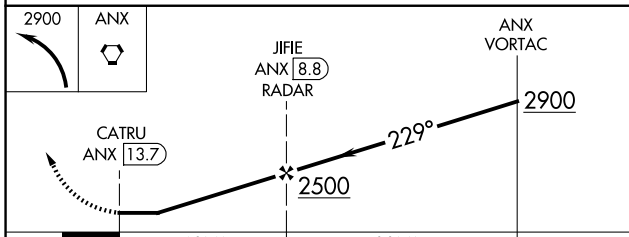
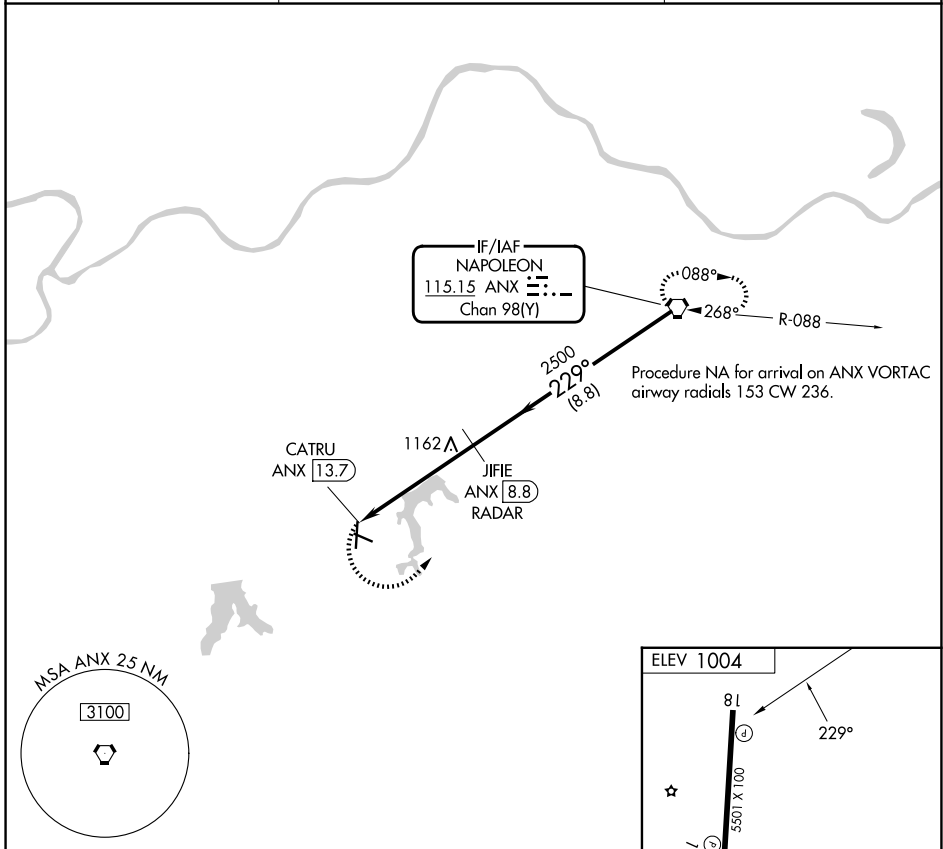
VOR-A

KANSAS CITY/LEE'S SUMMIT RGNL (LX'T)

⚠ DME or RADAR required. When local altimeter setting not received, use Kansas City Downtown/Wheeler Fld altimeter setting and increase all MDA 80 feet, and Cat C and D visibility ¼ mile.

⚠ MISSED APPROACH: Climbing left turn to 2900 direct ANX VORTAC and hold.

ASOS 124.175	KANSAS CITY APP CON 118.4 307.35	UNICOM 122.8 (CTAF) ①
------------------------	--	---------------------------------



REIL Rwy 11, 18, 29 and 36 ①
MIRL Rwy 11-29 and 18-36 ①

CATEGORY	A	B	C	D	FAF to MAP 4.9 NM					
CIRCLING	1440-1 436 (500-1)	1540-1 536 (600-1)	1780-2¼ 776 (800-2¼)	1780-2½ 776 (800-2½)	Knots	60	90	120	150	180
					Min:Sec	4:54	3:16	2:27	1:58	1:38

NC-3, 14 MAY 2026 to 11 JUN 2026

NC-3, 14 MAY 2026 to 11 JUN 2026