

WAAS CH 62942 W17A	APP CRS 177°	Rwy Ldg TDZE Apt Elev	4400 1274 1274
--	------------------------	-----------------------------	---

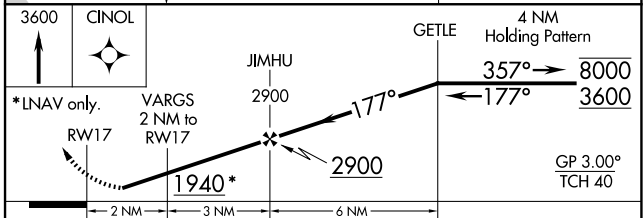
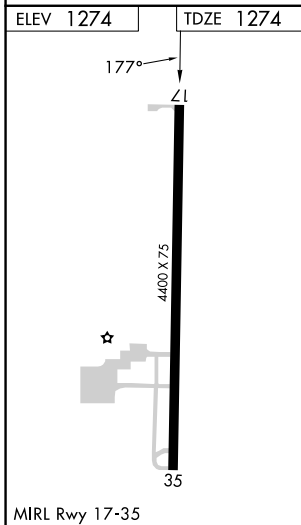
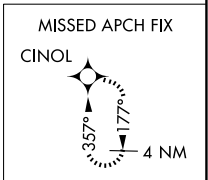
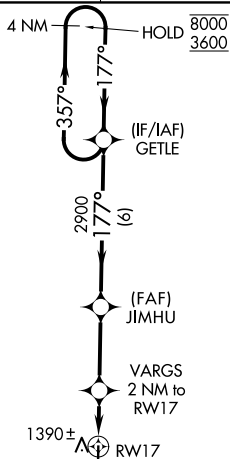
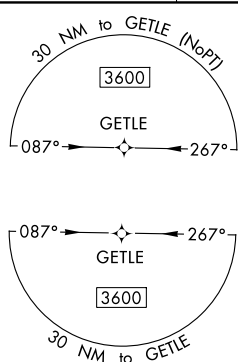
RNAV (GPS) RWY 17

FAIRVIEW MUNI (6K4)

RNP APCH. **NA** Circling Rwy 35 NA at night. Rwy 17 helicopter visibility reduction below $\frac{3}{4}$ SM NA. Baro-VNAV NA. Use Vance AFB altimeter setting; when not received, use Watonga altimeter setting; increase LPV DA to 1622 feet and all visibilities $\frac{1}{4}$ SM; increase LNAV/VNAV DA to 1678 feet and all visibilities $\frac{1}{4}$ SM; increase all MDA 40 feet.

MISSED APPROACH: Climb to 3600 direct CINOL and hold.

AWOS-3PT 120.0	KEND ATIS ★ 115.4 263.15	VANCE APP CON ★ 126.75 346.325	UNICOM 122.8 (CTAF)
--------------------------	------------------------------------	--	-------------------------------



CATEGORY	A	B	C	D
LPV DA		1592-1	318 (400-1)	
LNAV/VNAV DA		1648-1	374 (400-1)	
LNAV MDA	1720-1	446 (500-1)	1720- $\frac{1}{8}$	446 (500- $\frac{1}{8}$)
CIRCLING	1840-1 566 (600-1)	2020-1 746 (800-1)	2020- $\frac{1}{4}$ 746 (800- $\frac{1}{4}$)	2180-3 906 (1000-3)

SC-1, 14 MAY 2026 to 11 JUN 2026

SC-1, 14 MAY 2026 to 11 JUN 2026