

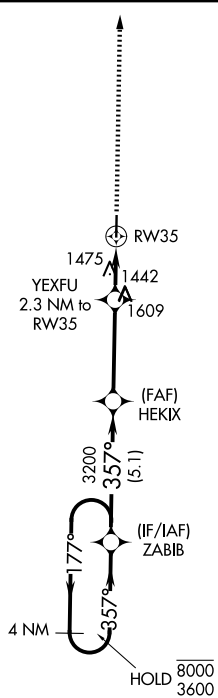
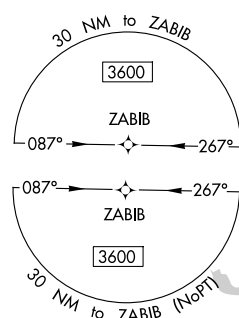
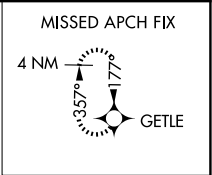
WAAS CH 82443 W35A	APP CRS 357°	Rwy Ldg TDZE Apt Elev	4400 1274 1274
----------------------------------------	------------------------	-----------------------------	-------------------------------------------

RNAV (GPS) RWY 35

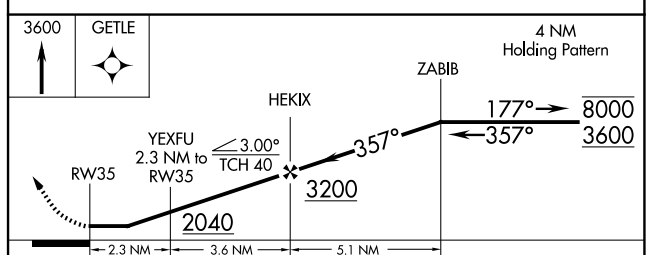
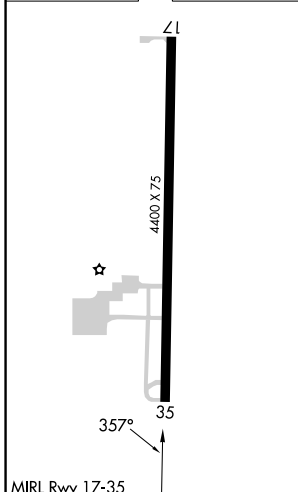
FAIRVIEW MUNI (6K4)

RNP APCH.		MISSED APPROACH: Climb to 3600 direct to GETLE and hold.	
<p>Procedure NA at night. Rwy 35 helicopter visibility reduction below 1 SM NA. Baro-VNAV NA. Use Vance AFB altimeter setting; when not received, use Watonga altimeter setting; increase all MDA 40 feet, and increase LP and LNAV visibility Cats C/D ½ SM.</p>			

AWOS-3PT 120.0	KEND ATIS ★ 115.4 263.15	VANCE APP CON ★ 126.75 346.325	UNICOM 122.8 (CTAF)
--------------------------	------------------------------------	------------------------------------------	-------------------------------



ELEV 1274	TDZE 1274
-----------	-----------



CATEGORY	A	B	C	D
LP MDA	1800-1	526 (600-1)	1800-1½	526 (600-1½)
LNAV MDA	1940-1	666 (700-1)	1940-1⅞	666 (700-1⅞)
CIRCLING	1940-1 666 (700-1)	2020-1 746 (800-1)	2020-2¼ 746 (800-2¼)	2180-3 906 (1000-3)

SC-1, 14 MAY 2026 to 11 JUN 2026

SC-1, 14 MAY 2026 to 11 JUN 2026