

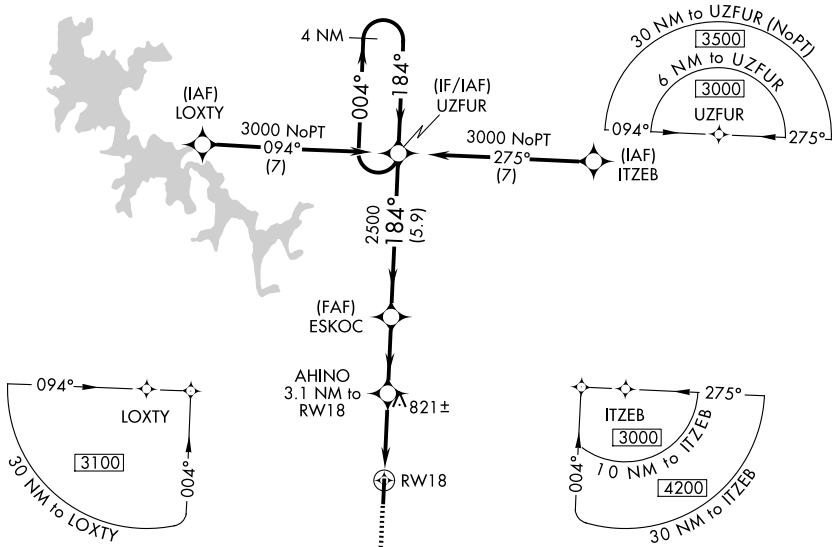
WAAS CH 48812 W18A	APP CRS 184°	Rwy Ldg TDZE Apt Elev	4750 609 614
--	------------------------	-----------------------------	---

RNAV (GPS) RWY 18

MURFREESBORO MUNI (MBT)

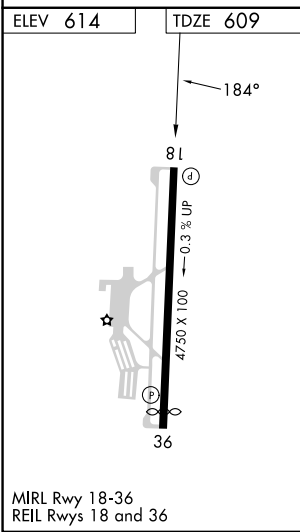
▼ For uncompensated Baro-VNAV systems, LNAV/VNAV NA below -16°C (4°F) or above 54°C (130°F). DME/DME RNP-0.3 NA. MISSED APPROACH: Climb to 3000 direct URACE and hold.

AWOS-3 133.975	NASHVILLE APP CON 118.4 360.7	GCO 135.075	UNICOM 123.075 (CTAF)
--------------------------	---	-----------------------	---------------------------------



SE-1, 14 MAY 2026 to 11 JUN 2026

SE-1, 14 MAY 2026 to 11 JUN 2026



MISSED APCH FIX URACE 4 NM Holding Pattern	
3000 URACE	VGSI and descent angles not coincident (VGSI Angle 3.00/TCH 20).
AHINO 3.1 NM to RW18 *1.4 NM to RW18	ESKOC 2500 *LNAV only. *1620
RW18 1.4 NM UZFUR 1.7 NM ESKOC 2.7 NM RW18 5.9 NM	UZFUR 4 NM Holding Pattern GP 3.00° TCH 40
CATEGORY	A B C D
LPV DA	859-3/4 250 (300-3/4) NA
LNAV/VNAV DA	898-7/8 289 (300-7/8) NA
LNAV MDA	1080-1 471 (500-1) 1080-1 3/8 471 (500-1 3/8) NA
CIRCLING	1080-1 466 (500-1) 1280-1 3/4 666 (700-1 3/4) NA