

WAAS CH <b>61332</b> <b>W36A</b>	APP CRS <b>004°</b>	Rwy Ldg TDZE Apt Elev	<b>4450</b> <b>614</b> <b>614</b>
--	------------------------	-----------------------------	---

# RNAV (GPS) RWY 36

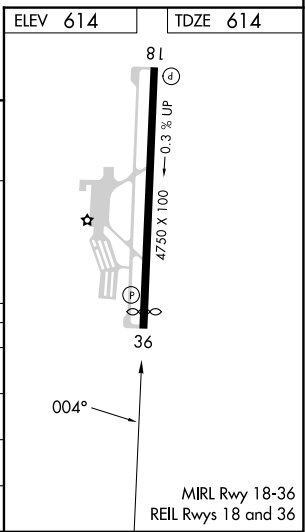
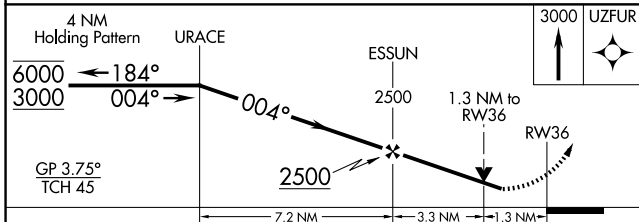
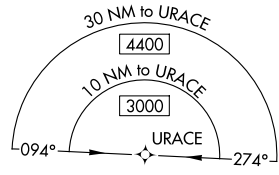
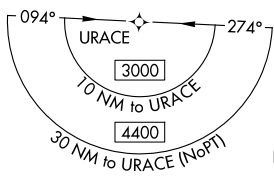
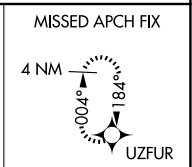
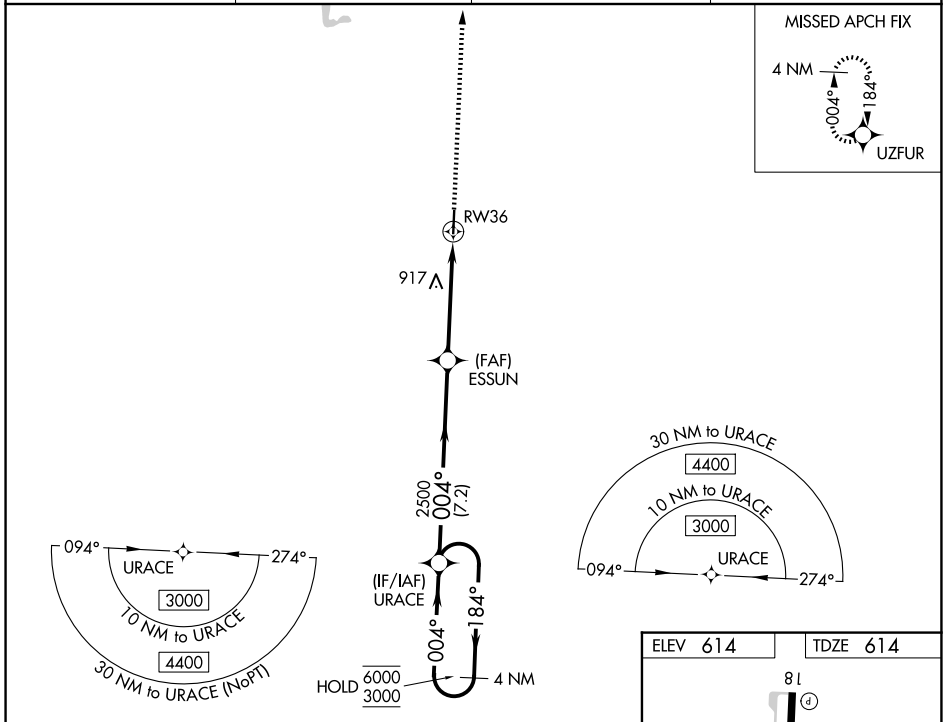
MURFREESBORO MUNI (MBT)

RNP APCH - GPS.

**▽** Rwy 36 helicopter visibility reduction below 3/4 SM NA.  
**▲** For uncompensated Baro-VNAV systems, procedure NA below -16°C or above 49°C.

MISSED APPROACH:  
Climb to 3000 direct  
UZUFUR and hold.

AWOS-3 <b>133.975</b>	NASHVILLE APP CON <b>118.4 360.7</b>	GCO <b>135.075</b>	UNICOM <b>123.075</b> (CTAF)
--------------------------	---	-----------------------	---------------------------------



CATEGORY	A	B	C	D
IPV DA	941-1 327 (400-1)			NA
LNAV/VNAV DA	1030-1 1/8 416 (500-1 1/8)			NA
LNAV MDA	1180-1 566 (600-1)		1180-1 5/8 566 (600-1 5/8)	NA
CIRCLING	1180-1 566 (600-1)		1280-1 3/4 666 (700-1 3/4)	NA

SE-1, 14 MAY 2026 to 11 JUN 2026

SE-1, 14 MAY 2026 to 11 JUN 2026