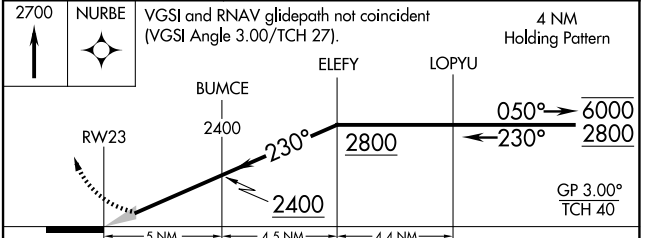
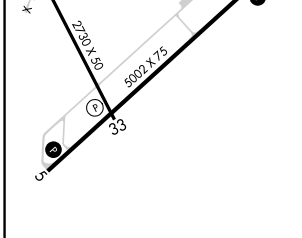
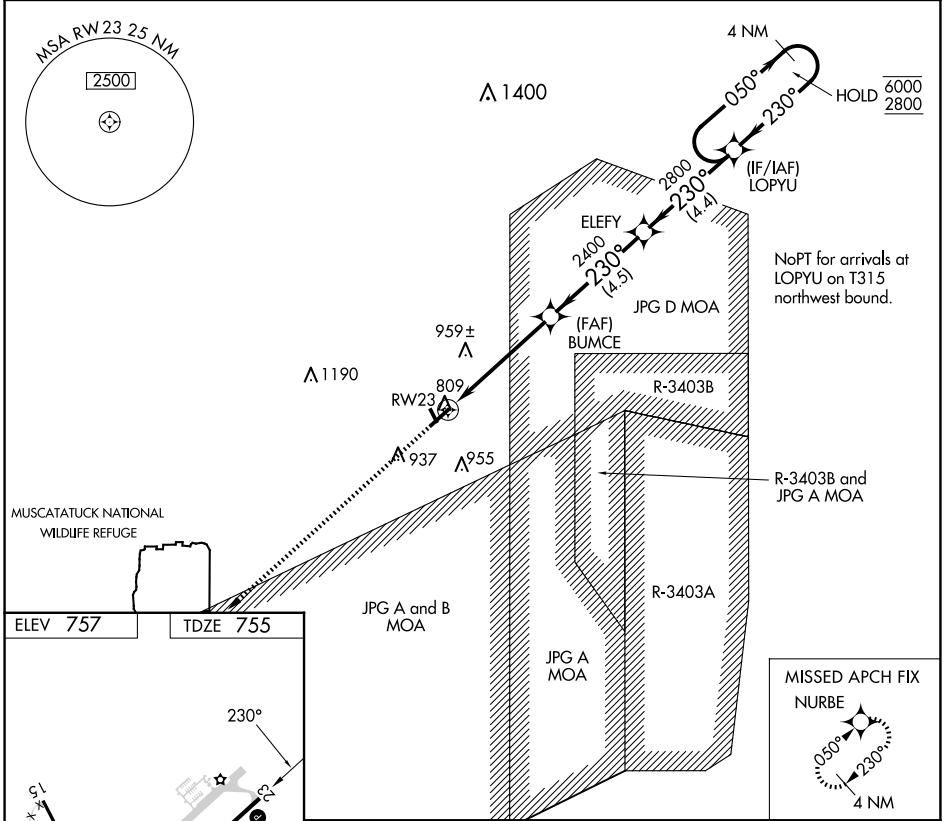


WAAS CH <b>63113</b> <b>W23A</b>	APP CRS <b>230°</b>	Rwy Ldg TDZE Apt Elev	<b>5002</b> <b>755</b> <b>757</b>
--	------------------------	-----------------------------	---

# RNAV (GPS) Z RWY 23

NORTH VERNON (OVO)

RNP APCH - GPS.		MISSED APPROACH: Climb to 2700 direct NURBE and hold.
<p><b>⚠ NA</b> When local altimeter setting not received, use GEZ altimeter setting and increase LPV DA to 1089 feet all visibilities ¼ mile.</p>		
AWOS-3 <b>120.625</b>	INDIANAPOLIS APP CON <b>134.85 317.8</b>	UNICOM <b>122.7 (CTAF) 0</b>



MIRL Rwy 5-23 0	MIRL Rwy 15-33	2700	NURBE	VGSI and RNAV glidepath not coincident (VGSI Angle 3.00/TCH 27).	4 NM Holding Pattern
		BUMCE	ELEFY	LOPYU	
		RWY 23	2400	2800	6000
			230°	230°	050°
			2400	2800	2800
			5 NM	4.5 NM	4.4 NM
CATEGORY	A	B	C	D	
LPV DA	1005-1 250 (300-1)			NA	

EC-2, 14 MAY 2026 to 11 JUN 2026

EC-2, 14 MAY 2026 to 11 JUN 2026