

WAAS CH 77882 W16A	APP CRS 155°	Rwy Ldg TDZE Apt Elev	5310 689 689
--	------------------------	-----------------------------	---

RNAV (GPS) RWY 16

ABERNATHY FLD (GZS)

RNP APCH - GPS.

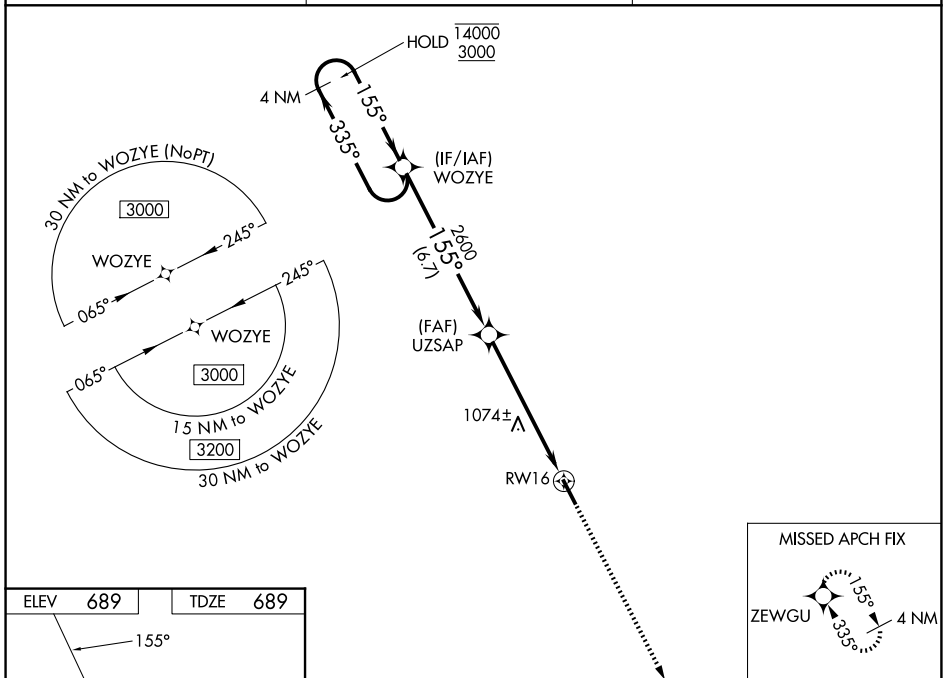
▽ For uncompensated Baro-VNAV systems, LNAV/VNAV NA below -16°C or above 54°C.
▲ NA Baro-VNAV and VDP NA when using MDQ altimeter setting. Rwy 16 helicopter visibility reduction below ¾ SM NA. When local altimeter setting not received, use MDQ altimeter setting: increase LPV DA to 1245 feet, and all visibilities ¼ SM; increase LNAV/VNAV DA to 1362 feet and all visibilities ⅓ SM; increase all MDAs 100 feet and LNAV visibility Cat B ¼ SM, Cats C and D ⅓ SM, and Circling visibility Cats A and B ¼ SM and Cat C ½ SM.

MISSED APPROACH:
Climb to 3000 direct ZEWGU and hold.

AWOS-3
118.275

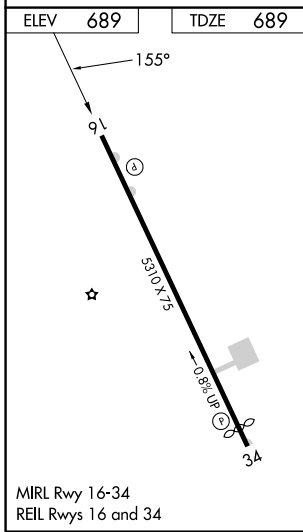
MEMPHIS CENTER
125.85 379.25

UNICOM
122.8 (CTAF)



SE-1, 14 MAY 2026 to 11 JUN 2026

SE-1, 14 MAY 2026 to 11 JUN 2026



4 NM Holding Pattern		VGSI and RNAV glidepath not coincident (VGSI Angle 3.80/TCH 23).		3000	ZEWGU
14000 3000		← 335°	→ 155°	1.6 NM to RWY 16	
GP 3.00° TCH 45			2600		
		6.7 NM	4.3 NM	1.6 NM	
CATEGORY	A	B	C	D	
LPV DA	1164-1⅓ 475 (500-1⅓)				
LNAV/VNAV DA	1281-1¾ 592 (600-1¾)				
LNAV MDA	1340-1	651 (700-1)	1340-1⅞	651 (700-1⅞)	
CIRCLING	1420-1 731 (800-1)	1480-1 791 (800-1)	1480-2¼ 791 (800-2¼)	1640-3 951 (1000-3)	