

VORTAC RQZ <b>112.2</b> Chan <b>59</b>	APP CRS <b>313°</b>	Rwy Ldg <b>5010</b> TDZE <b>665</b> Apt Elev <b>689</b>
--	------------------------	---

# VOR RWY 34

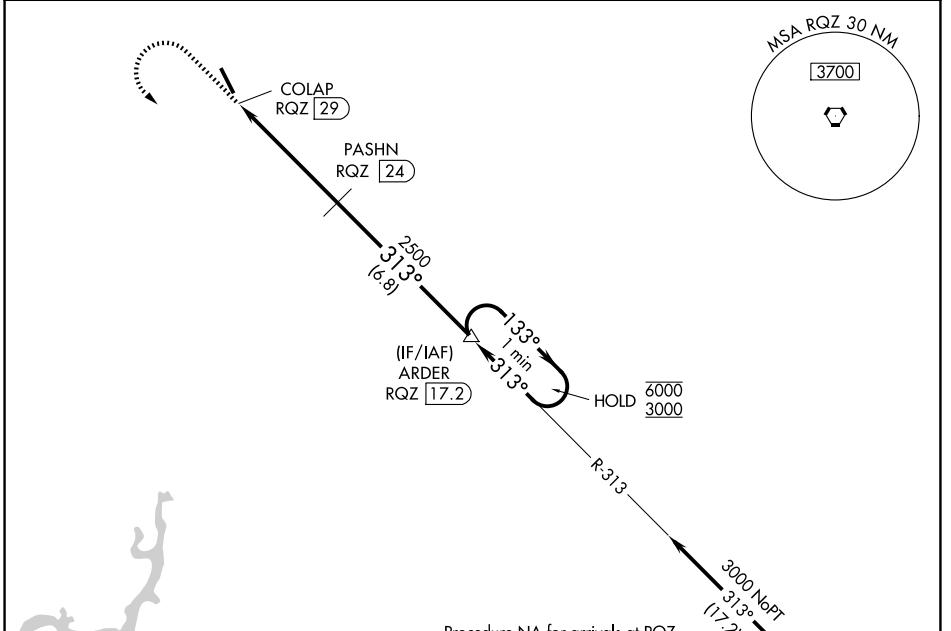
ABERNATHY FLD (GZS)

DME required.

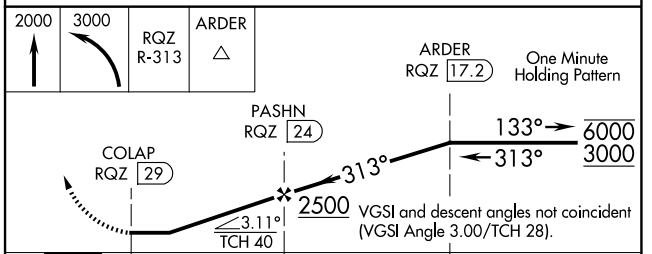
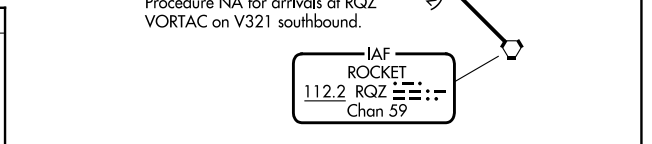
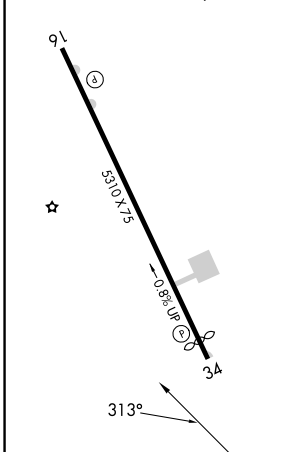
⚠ NA Circling Rwy 16 NA at night. Rwy 34 helicopter visibility reduction below 3/4 SM NA. When local altimeter setting not received, use MDQ altimeter setting and increase all MDA 100 feet and increase S-34 Cats A/B visibility 1/4 SM and Cats C/D visibility 1/2 SM; increase Circling Cat B visibility 1/4 SM and Cat C visibility 1/2 SM.

MISSED APPROACH: Climb to 2000 then climbing left turn to 3000 on RQZ VORTAC R-313 to ARDER/RQZ 17.2 DME and hold.

AWOS-3 <b>118.275</b>	MEMPHIS CENTER <b>125.85 379.25</b>	UNICOM <b>122.8 (CTAF)</b>
--------------------------	--	-------------------------------



ELEV <b>689</b>	TDZE <b>665</b>
MIRL Rwy 16-34 REIL Rws 16 and 34	



CATEGORY	A	B	C	D
S-34	1520-1 855 (900-1)	1520-1 1/4 855 (900-1 1/4)	1520-2 1/2	855 (900-2 1/2)
CIRCLING	1520-1 1/4	831 (900-1 1/4)	1520-2 1/2 831 (900-2 1/2)	1640-3 951 (1000-3)