

APP CRS	Rwy Ldg	<b>4001</b>
<b>224°</b>	TDZE	<b>570</b>
	Apt Elev	<b>570</b>

# RNAV (GPS) RWY 22

NEWBERRY COUNTY (EOE)

RNP APCH - GPS

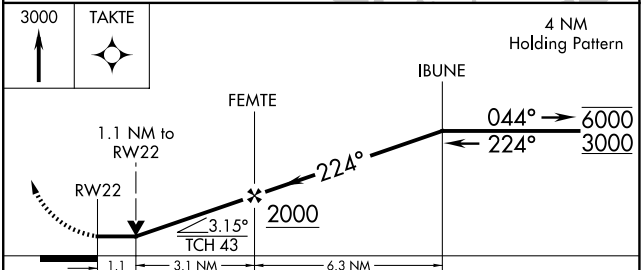
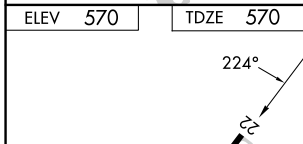
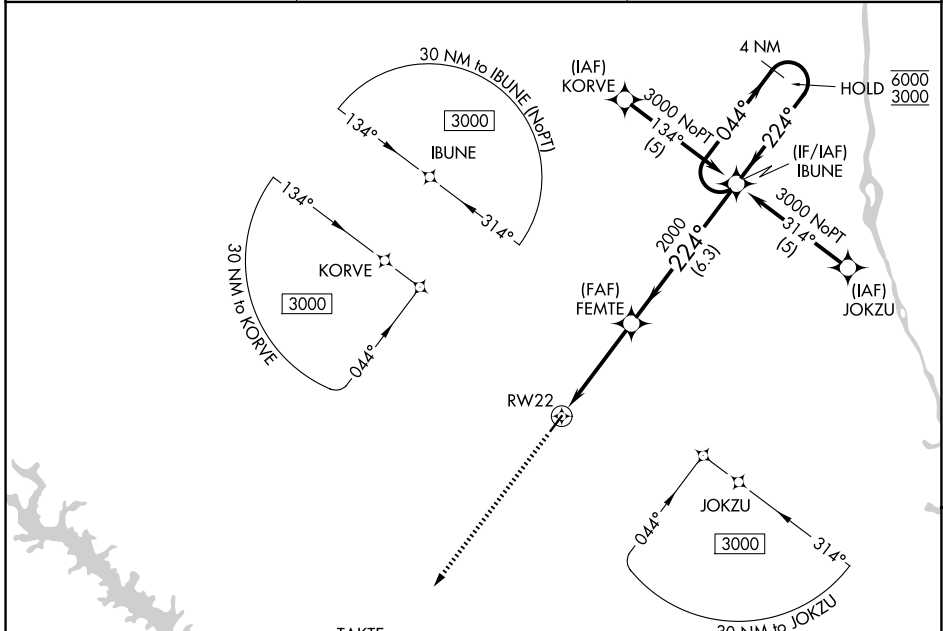
**⚠** VDP NA when using GRD altimeter setting. Rwy 22 helicopter visibility reduction below 3/4 SM NA. When local altimeter setting not received, use GRD altimeter setting and increase all MDA 80 feet.

MISSED APPROACH: Climb to 3000 direct TAKTE and hold.

AWOS-3  
**124.275**

COLUMBIA APP CON  
**133.4 285.6**

UNICOM  
**122.8 (CTAF) 0**



CATEGORY	A	B	C	D
LNAV MDA	980-1	410 (500-1)	NA	
CIRCLING	1080-1 510 (600-1)	1160-1 590 (600-1)	NA	

SE-2, 14 MAY 2026 to 11 JUN 2026

SE-2, 14 MAY 2026 to 11 JUN 2026