

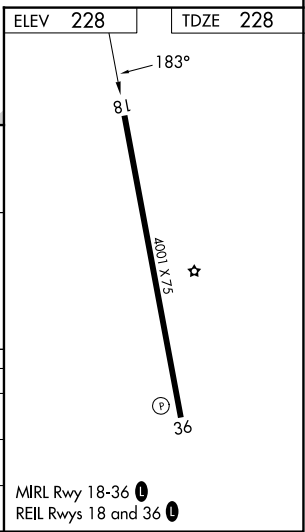
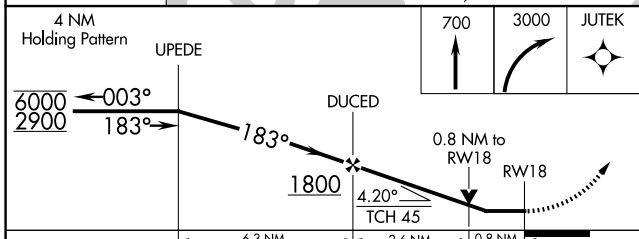
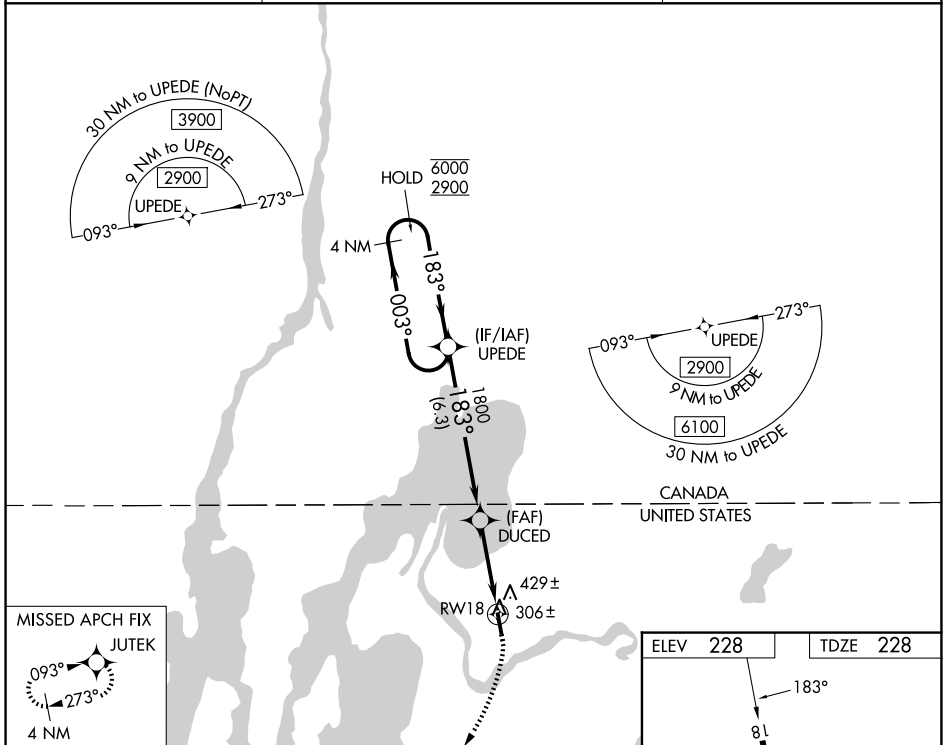
WAAS CH <b>78122</b> <b>W18A</b>	APP CRS <b>183°</b>	Rwy Ldg TDZE Apt Elev	<b>4001</b> <b>228</b> <b>228</b>
--	------------------------	-----------------------------	---

# RNAV (GPS) RWY 18

FRANKLIN COUNTY STATE (F'SO)

RNP APCH - GPS.	<p>▼ Rwy 18 helicopter visibility reduction below 3/4 SM NA. Circling Rwy 36 NA at night. When local altimeter setting not received, use PBG altimeter setting and increase all MDAs 80 feet and Circling visibility Cat B 1/4 SM. VDP NA when using PBG altimeter setting.</p>	MISSED APPROACH: Climb to 700 then climbing right turn to 3000 direct JUTEK and hold.
-----------------	---	---

AWOS-3 <b>119.025</b>	BURLINGTON APP CON * <b>121.1</b> <b>278.8 (E)</b> <b>360.8 (W)</b>	UNICOM <b>122.8 (CTAF)</b> ①
--------------------------	---	---------------------------------



CATEGORY	A	B	C	D
LP MDA	640-1	412 (500-1)		NA
LNAV MDA	680-1	452 (500-1)		NA
CIRCLING	780-1 552 (600-1)	960-1 732 (800-1)		NA

NE-1, 14 MAY 2026 to 11 JUN 2026

NE-1, 14 MAY 2026 to 11 JUN 2026