

VOR/DME TDD <b>108.6</b> Chan <b>23</b>	APP CRS <b>272°</b>	Rwy Idg TDZE Apt Elev	<b>4402</b> <b>2920</b> <b>2925</b>
---	------------------------	-----------------------------	---

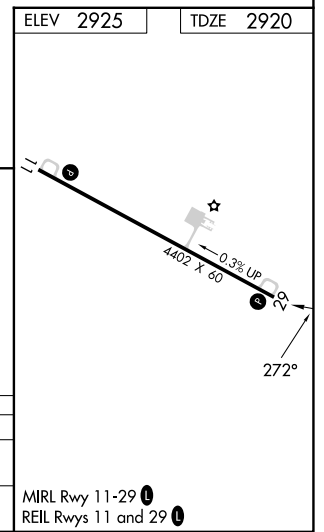
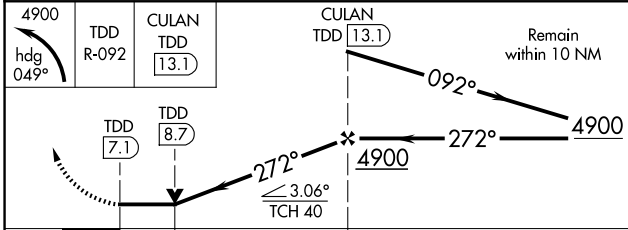
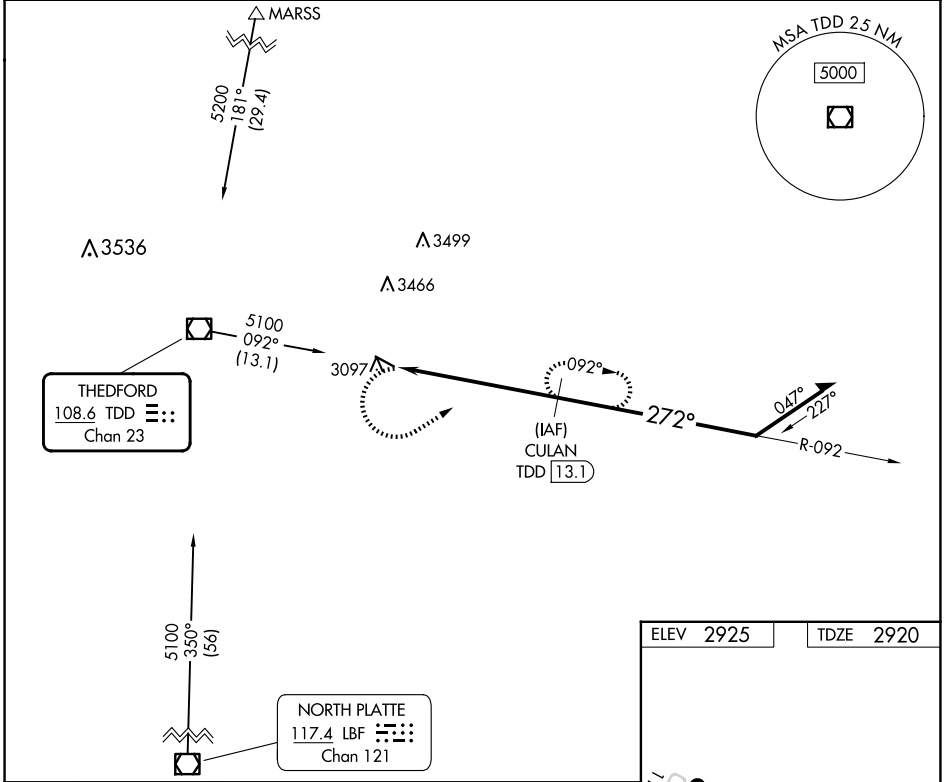
**VOR RWY 29**  
THOMAS COUNTY (TIF')

DME required.

**NA** Rwy 29 helicopter visibility reduction below 3/4 SM NA. When local altimeter setting not received, use North Platte altimeter setting and increase all MDA 140 feet. VDP NA when using North Platte altimeter setting.

MISSED APPROACH: Climbing left turn to 4900 on heading 049° and TDD R-092 to CULAN/TDD 13.1 DME and hold.

AWOS-3 <b>120.825</b>	DENVER CENTER <b>127.95 338.2</b>	CTAF <b>122.9</b>
--------------------------	--------------------------------------	----------------------



CATEGORY	A	B	C	D
S-29	3480-1	560 (600-1)		NA
CIRCLING	3480-1	555 (600-1)		NA

NC-2, 14 MAY 2026 to 11 JUN 2026

NC-2, 14 MAY 2026 to 11 JUN 2026