

WAAS CH 86547 W13A	APP CRS 129°	Rwy Ldg TDZE Apt Elev	4001 1214 1216
--	------------------------	-----------------------------	---

RNAV (GPS) RWY 13

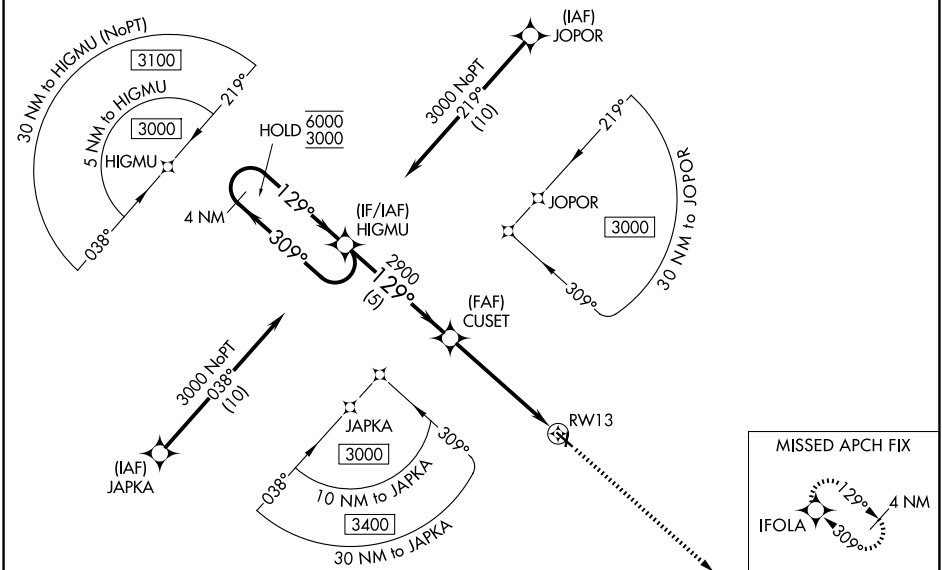
ALGONA MUNI (AXA)

RNP APCH - GPS.

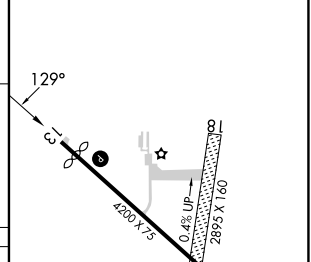
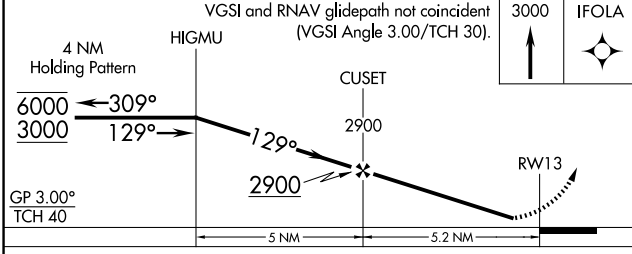
⚠ Rwy 13 helicopter visibility reduction below 1 SM NA. For uncompensated Baro-VNAV systems, LNAV/VNAV NA below -17°C or above 54°C. Baro-VNAV NA when using FXY altimeter setting. Procedure NA at night. When local altimeter setting not received, use FXY altimeter setting and increase LPV DA to 1535 feet; increase LNAV/VNAV DA to 1668 feet and all visibilities 1/2 SM. Increase all MDAs 80 feet. Circling NA to Rwy 18 and 36.

MISSED APPROACH: Climb to 3000 direct IFOLA and hold.

AWOS-3 118.475	MINNEAPOLIS CENTER 134.0 288.3	UNICOM 122.8 (CTAF)
--------------------------	--	-------------------------------



ELEV 1216	TDZE 1214
-----------	-----------



CATEGORY	A	B	C	D
LPV DA	1464-1	250 (300-1)		NA
LNAV/VNAV DA	1597-1 1/8	383 (400-1 1/8)		NA
LNAV MDA	1740-1	486 (500-1)		NA
CIRCLING	1740-1 524 (600-1)	1800-1 584 (600-1)		NA

MIRL Rwy 13-31 **⓪**
REIL Rws 13 and 31 **⓪**

NC-3, 14 MAY 2026 to 11 JUN 2026

NC-3, 14 MAY 2026 to 11 JUN 2026