

WAAS CH 87032 W04A	APP CRS 044°	Rwy Ldg TDZE Apt Elev	4001 821 823
--	------------------------	-----------------------------	---

RNAV (GPS) RWY 4

CLINTON RGNL (GLY)

RNP APCH.

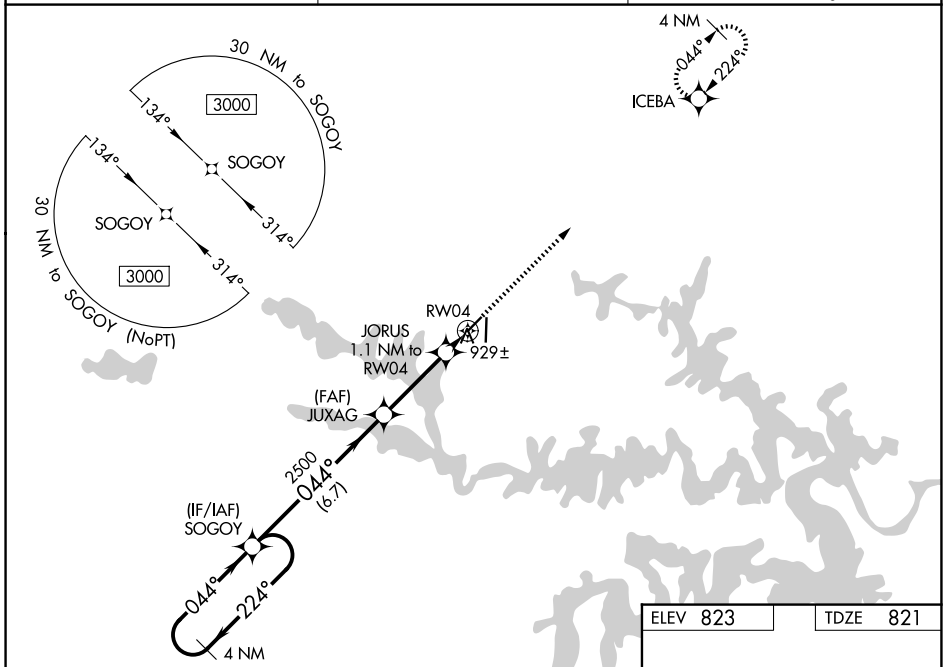
▼ For uncompensated Baro-VNAV systems, LNAV/VNAV NA below -16°C or above 54°C.
▲ When local altimeter setting not received, use Whiteman AFB altimeter setting and increase all DA 61 feet and all MDA 80 feet; increase LNAV-VNAV all Cats and LNAV Cat C visibility ¼ mile. Baro-VNAV NA when using Whiteman AFB altimeter setting. Straight-in Rwy 4 NA at night, Circling Rwy 4 NA at night. Rwy 4 helicopter visibility reduction below 1 SM NA.

MISSED APPROACH:
Climb to 3000 direct
ICEBA and hold.

AWOS-3PT
120.475

WHITEMAN APP CON *
127.45

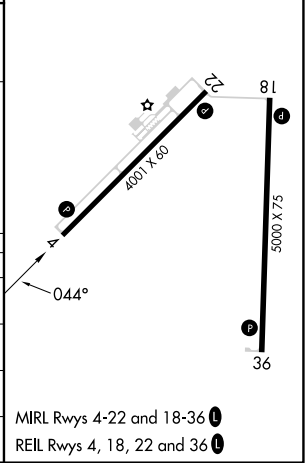
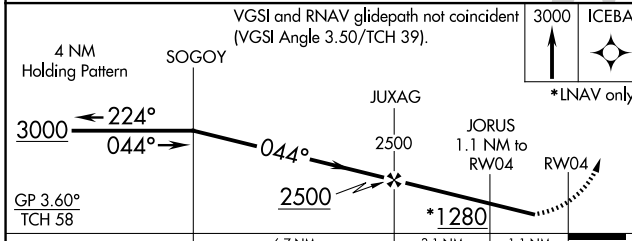
UNICOM
122.8 (CTAF) 0



NC-3, 14 MAY 2026 to 11 JUN 2026

NC-3, 14 MAY 2026 to 11 JUN 2026

ELEV 823	TDZE 821
----------	----------



CATEGORY	A	B	C	D
LPV DA	1121-1	300 (300-1)		NA
LNAV/VNAV DA	1206-1 1/8	385 (400-1 1/8)		NA
LNAV MDA	1180-1	359 (400-1)		NA
CIRCLING	1280-1 457 (500-1)	1300-1 477 (500-1)	1340-1 1/2 517 (600-1 1/2)	NA