

WAAS CH 70407 W29A	APP CRS 291°	Rwy Ldg TDZE Apt Elev	5480 127 145
--	------------------------	-----------------------------	---

RNAV (GPS) RWY 29

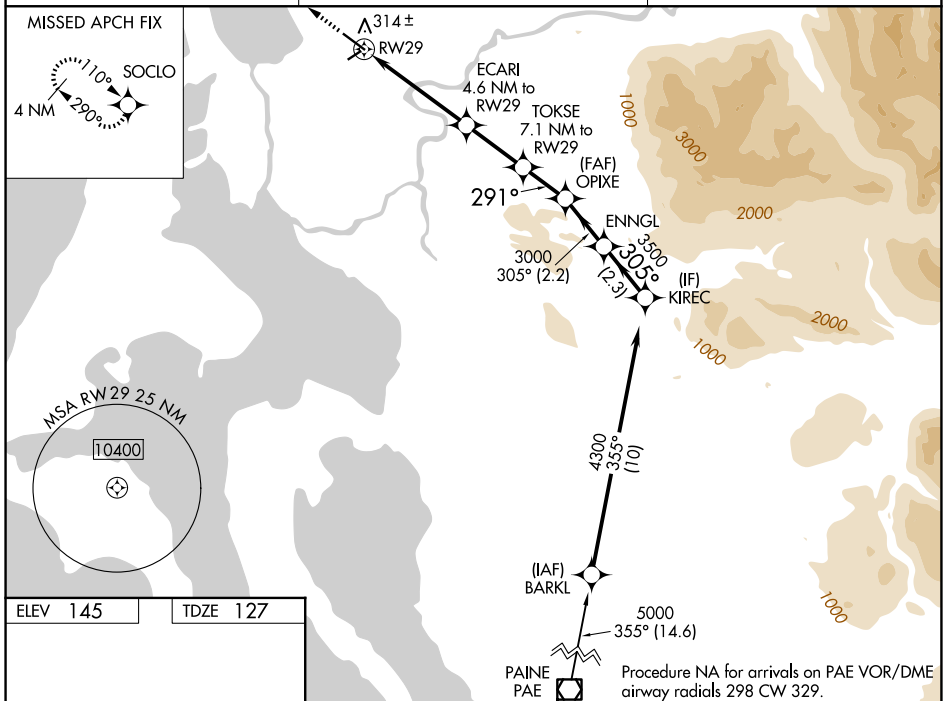
SKAGIT RGNL (BVS)

RNP APCH.

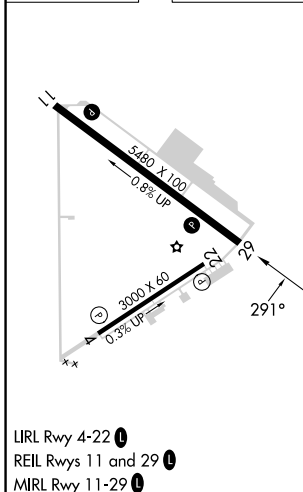
▼ For uncompensated Baro-VNAV systems, LNAV/VNAV NA below -15°C or above 54°C.
 ▲ Baro-VNAV and VDP NA when using Friday Harbor altimeter setting. When local altimeter setting not received use Friday Harbor altimeter setting; increase LPV DA to 438 feet, LNAV/VNAV DA to 536 feet and all Cats visibility ¼ SM; increase all MDA 60 feet.

MISSED APPROACH: Climb to 4000 direct SOCLO and hold, continue climb-in-hold to 4000.

AWOS-3 121.125	WHIDBEY APP CON 120.7 270.8	UNICOM 123.075 (CTAF)
--------------------------	---------------------------------------	---------------------------------



ELEV 145	TDZE 127
----------	----------



LIRL Rwy 4-22
 REIL Rws 11 and 29
 MIRL Rwy 11-29

4000	SOCLO				
*LNAV only	ECARI 4.6 NM to RW29	TOKSE 7.1 NM to RW29	OPIXE 3000	ENNGL 3500	KIREC 4300
	*1.4 NM to RW29				
	1600*	2400*	3000	305°	4300
	1.4 NM	3.2 NM	2.5 NM	1.9 NM	2.2 NM
291°					
GP 3.00°					TCH 42
CATEGORY	A	B	C	D	
LPV DA	377-7/8		250 (300-7/8)		
LNAV/VNAV DA	475-1 1/4		348 (400-1 1/4)		
LNAV MDA	580-1	453 (500-1)	580-1 3/8	453 (500-1 3/8)	

NW-1, 14 MAY 2026 to 11 JUN 2026

NW-1, 14 MAY 2026 to 11 JUN 2026