

VOR/DME OLS 114.65 Chan 93(Y)	APP CRS 139°	Rwy Ldg TDZE Apt Elev N/A N/A 3955
---	------------------------	---

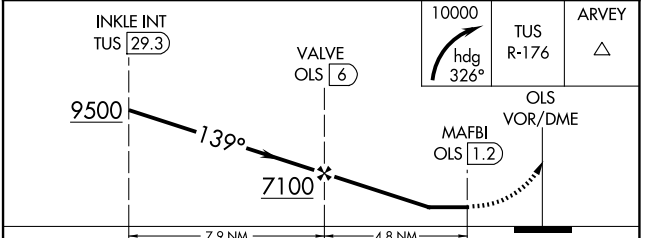
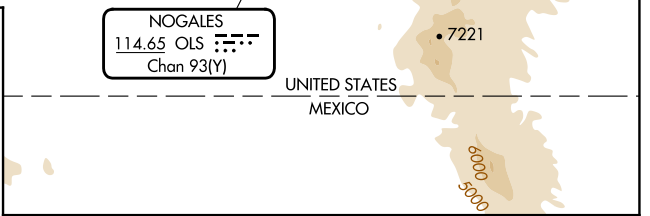
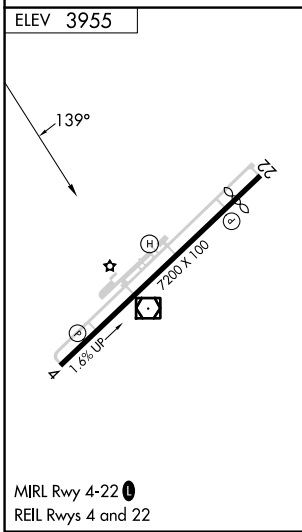
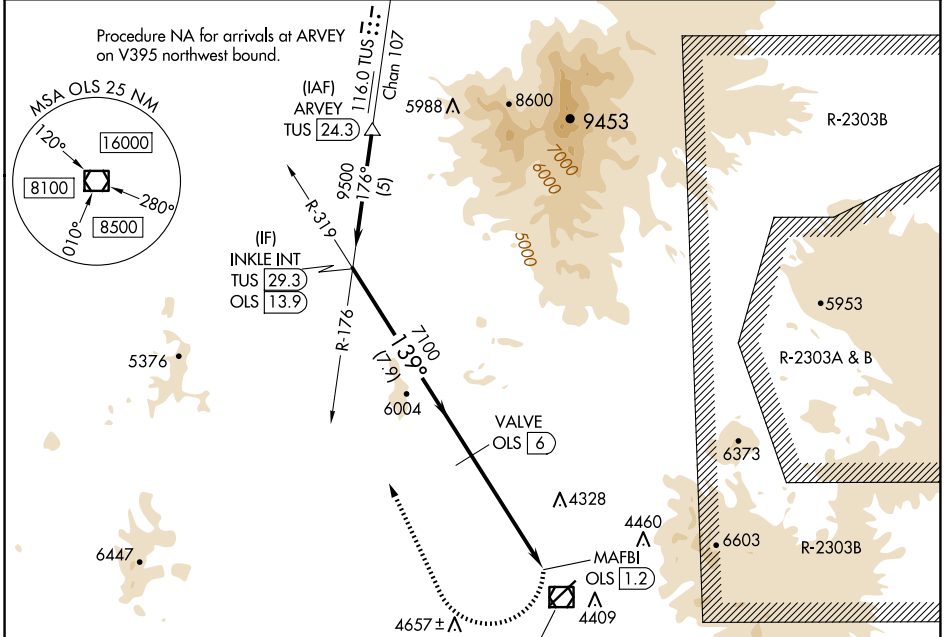
VOR-B
NOGALES INTL (OLS)

DME required.

When local altimeter setting not received, procedure NA.

MISSED APPROACH: Climbing right turn to 10000 on heading 326° and TUS R-176 to ARVEY/TUS 24.3 DME.

ASOS 121.125	TUCSON APP CON 118.75 269.55	UNICOM 122.8 (CTAF) 0
------------------------	--	---------------------------------



CATEGORY	A	B	C	D
CIRCLING	6640-1¼ 2685 (2700-1¼)	6640-1½ 2685 (2700-1½)	6640-3 2685 (2700-3)	6820-3 2865 (2900-3)

SW-4, 14 MAY 2026 to 11 JUN 2026

SW-4, 14 MAY 2026 to 11 JUN 2026