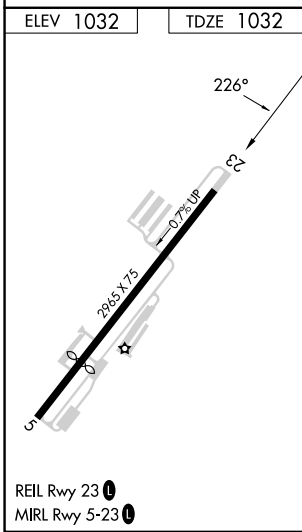
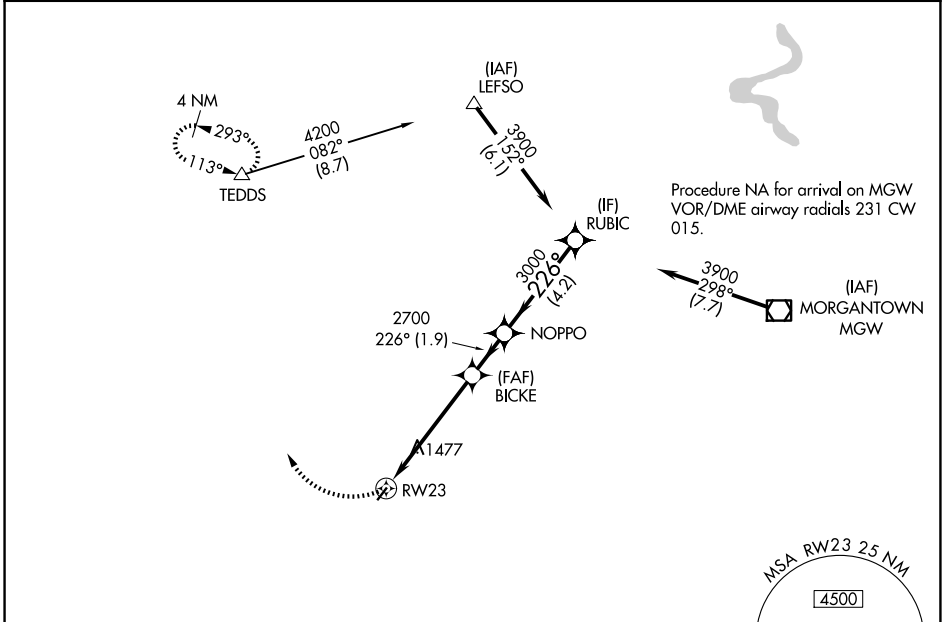


| | | |
|------------------------|-----------------------------|---|
| APP CRS 226° | Rwy Ldg TDZE Apt Elev | 2965 1032 1032 |
|------------------------|-----------------------------|---|

RNAV (GPS) RWY 23

FAIRMONT MUNI-FRANKMAN FLD (4G7)

| | | | |
|---|---|---|--|
| RNP APCH. | | MISSED APPROACH: Climbing right turn to 4000 direct TEDDS and hold. | |
| <p>Procedure NA at night. Rwy 23 helicopter visibility reduction below 1 SM NA.</p> | | | |
| CKB ASOS-3 127,825 | CLARKSBURG APP CON* 121.15 284.65 | CLNC DEL 118.35 | UNICOM 122.8 (CTAF) 1 |



| | | | | | |
|----------|-----------------------|-----------------------------|-------------------------|--------|--|
| 4000 | TEDDS | Visual Segment - Obstacles. | | | |
| | △ | | | | |
| | | NOPPO | | RUBIC | |
| | | BICKE | | | |
| | RW23 | 2700 | 3000 | 3900 | |
| | | 5.1 NM | 1.9 NM | 4.2 NM | |
| CATEGORY | A | B | C | D | |
| LNAV MDA | 1840-1 808 (900-1) | 1840-1¼ 808 (900-1¼) | 1840-2½ 808 (900-2½) | NA | |
| CIRCLING | 1840-1 808 (900-1) | 1840-1¼ 808 (900-1¼) | 2020-3 988 (1000-3) | NA | |

NE-4, 14 MAY 2026 to 11 JUN 2026

NE-4, 14 MAY 2026 to 11 JUN 2026