

APP CRS 308°	Rwy Idg 3444
	TDZE 363
	Apt Elev 365

RNAV (GPS) RWY 31

YOAKUM MUNI (T85)

RNP APCH-GPS.

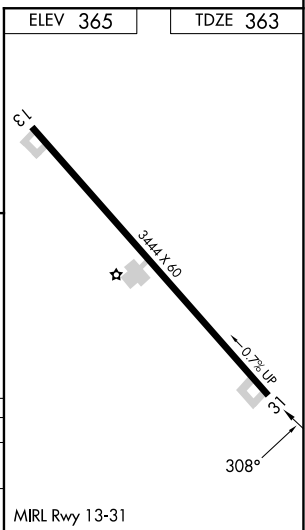
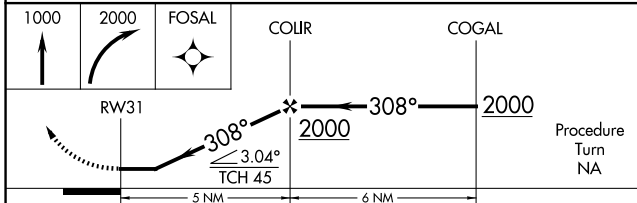
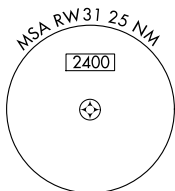
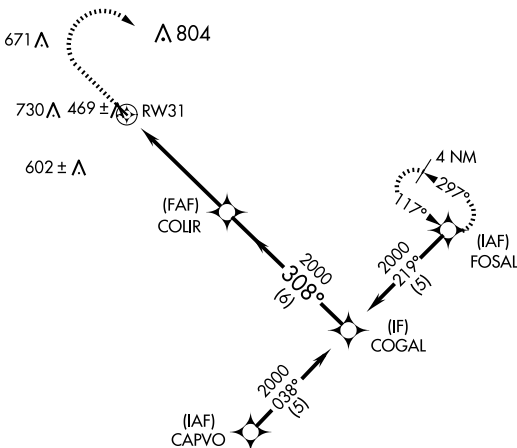
▼ Use Victoria Rgnl altimeter setting. Procedure NA at night.
 ▲ NA Rwy 31 helicopter visibility reduction below 3/4 SM NA.

MISSED APPROACH: Climb to 1000 then climbing right turn to 2000 direct FOSAL and hold.

VCT ASOS
119.025

HOUSTON CENTER
132.8 343.7

CTAF
122.9



CATEGORY	A	B	C	D
LNVA MDA	840-1	477 (500-1)	840-1 1/4 477 (500-1 1/4)	NA
CIRCLING	920-1	555 (600-1)	1200-2 1/2 835 (900-2 1/2)	NA

SC-3, 14 MAY 2026 to 11 JUN 2026

SC-3, 14 MAY 2026 to 11 JUN 2026