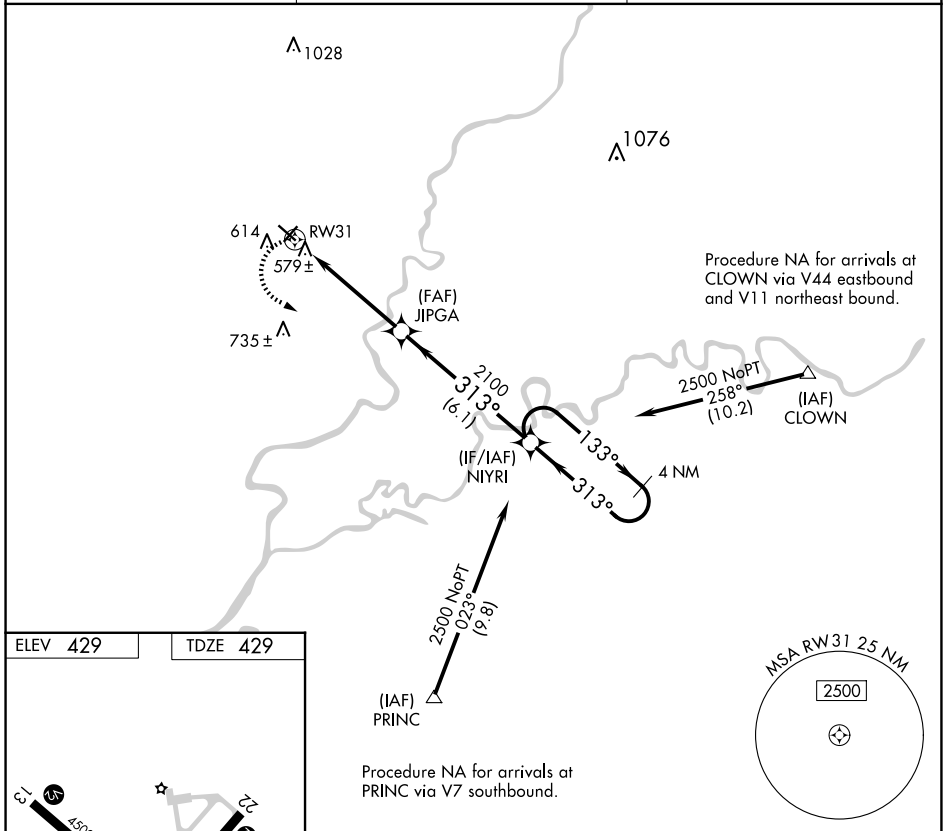


APP CRS	Rwy Idg	<b>4500</b>
<b>313°</b>	TDZE	<b>429</b>
	Apt Elev	<b>429</b>

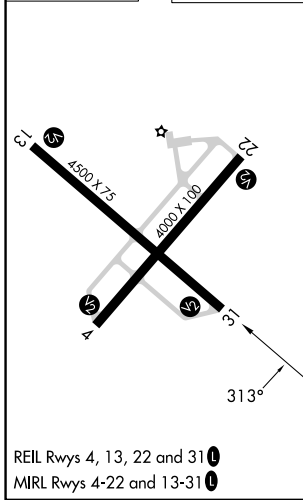
# RNAV (GPS) RWY 31

MOUNT CARMEL MUNI (AJG)

RNP APCH.		MISSED APPROACH: Climbing left turn to 2500 direct NIYRI and hold.
<p>▼ When local altimeter setting not received, use Lawrenceville altimeter setting and increase all MDA 40 feet and increase LNAV Cat D visibility ½ mile.</p> <p>▲ NA</p>		
AWOS-3 <b>134.9</b>	EVANSVILLE APP CON★ <b>125.6 343.7</b>	UNICOM <b>122.7 (CTAF) 0</b>



ELEV 429	TDZE 429
----------	----------



REIL Rwy's 4, 13, 22 and 31  
MIRL Rwy's 4-22 and 13-31

2500	NIYRI	VGSi and descent angles not coincident (VGSi Angle 3.00/TCH 25).		4 NM	NIYRI	4 NM	Holding Pattern
RWY 31		JIPGA	2100	133°	313°	2500	
5 NM		6.1 NM					
CATEGORY	A	B	C	D			
LNAV MDA	840-1 411 (500-1)		840-1¼ 411 (500-1¼)				

EC-3, 14 MAY 2026 to 11 JUN 2026

EC-3, 14 MAY 2026 to 11 JUN 2026