

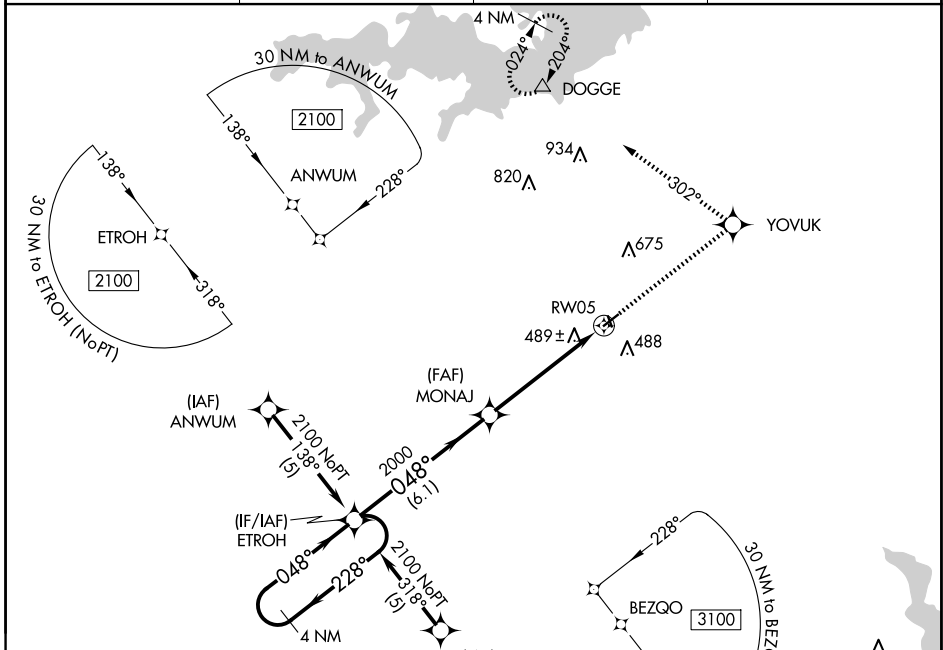
APP CRS	Rwy Idg	<b>3800</b>
<b>048°</b>	TDZE	<b>280</b>
	Apt Elev	<b>280</b>

# RNAV (GPS) RWY 5

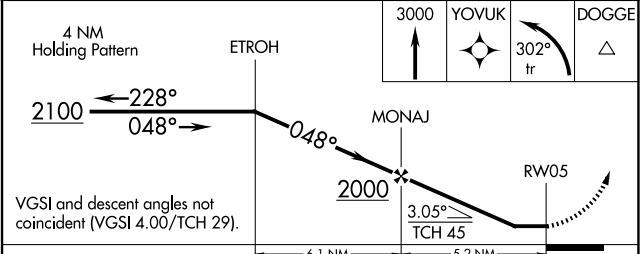
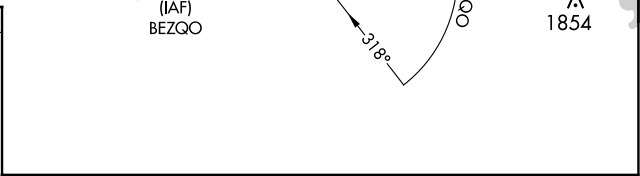
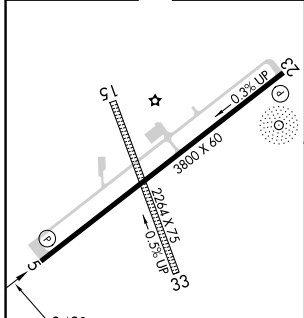
HALL-MILLER MUNI (ATA)

RNP APCH.		MISSED APPROACH: Climb to 3000 direct YOYUK and left turn via 302° track to DOGGE and hold.
▼	Rwy 5 helicopter visibility reduction below 3/4 SM NA. Use Texarkana altimeter setting, when not received use Mount Pleasant altimeter setting and increase all MDA 40 feet.	
▲ NA		

AWOS-3 <b>118.250</b>	TXK ASOS <b>120.2</b>	FORT WORTH CENTER <b>123.925 269.475</b>	CTAF <b>122.9</b>
--------------------------	--------------------------	---	----------------------



ELEV 280	TDZE 280
----------	----------



MIRL Rwy 5-23	REIL Rwy 5 and 23			
CATEGORY	A	B	C	D
LNAV MDA	860-1	580 (600-1)		NA

SC-2, 14 MAY 2026 to 11 JUN 2026

SC-2, 14 MAY 2026 to 11 JUN 2026