

WAAS CH <b>81935</b> <b>W26A</b>	APP CRS <b>259°</b>	Rwy Idg TDZE Apt Elev	<b>4051</b> <b>696</b> <b>698</b>
--	------------------------	-----------------------------	---

# RNAV (GPS) RWY 26

LAURENS COUNTY (LUX)

RNP APCH-GPS.

**▼** Rwy 26 helicopter visibility reduction below  $\frac{3}{4}$  SM NA.

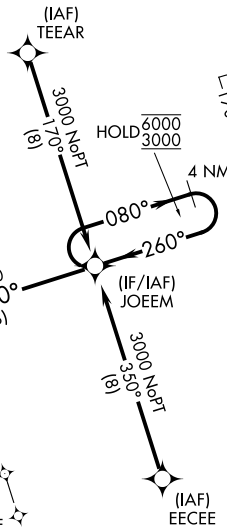
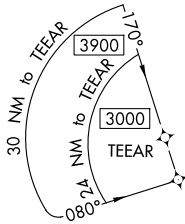
MISSED APPROACH: Climb to 3000 direct REINR and hold.

AWOS-3  
**123.975**

GREER APP CON ★  
**120.6 350.2**

UNICOM  
**122.8 (CTAF) 0**

MISSED APCH FIX



▲ 1988

▲ 1228

▲ 919

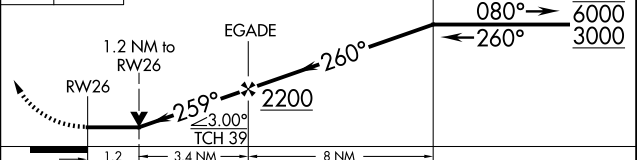
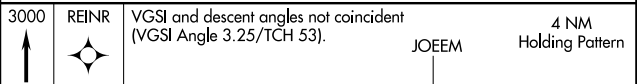
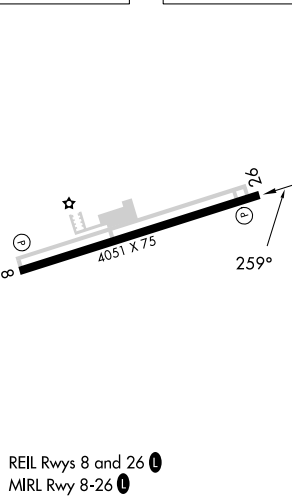
▲ 1073

▲ 1068

SE-2, 14 MAY 2026 to 11 JUN 2026

SE-2, 14 MAY 2026 to 11 JUN 2026

ELEV 698 TDZE 696



CATEGORY	A	B	C	D
LP MDA	1160-1	464 (500-1)		NA
LNAV MDA	1160-1	464 (500-1)		NA
<input checked="" type="checkbox"/> CIRCLING	1200-1	502 (600-1)		NA