

APP CRS	Rwy Ldg	<b>6600</b>
<b>083°</b>	TDZE	<b>9</b>
	Apt Elev	<b>9</b>

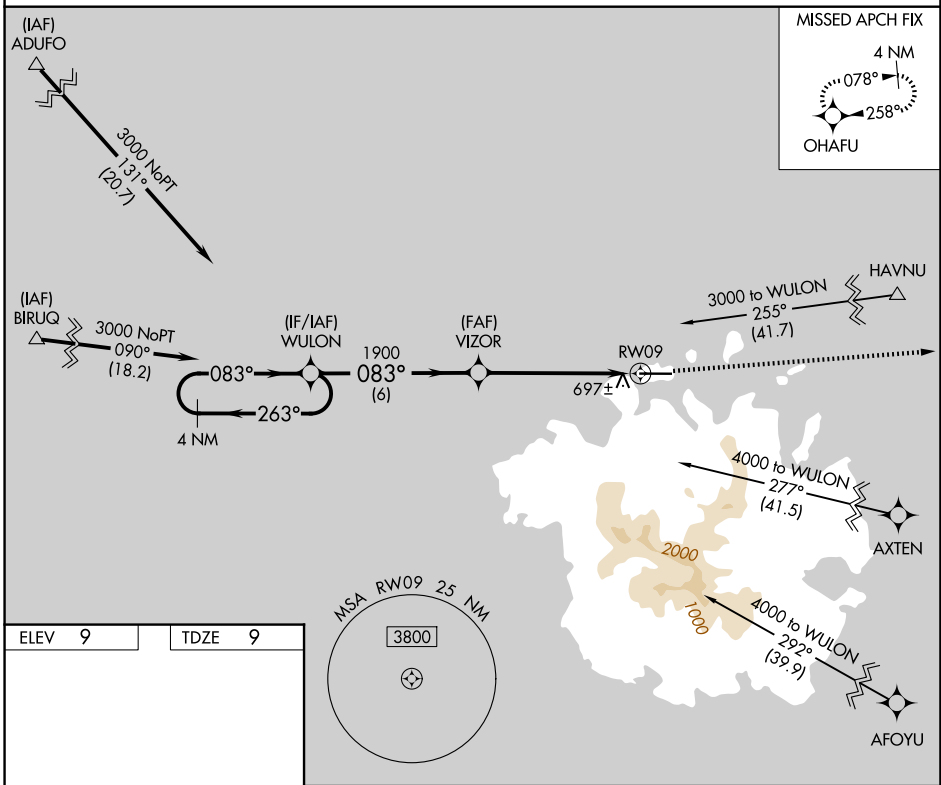
# RNAV (GPS) X RWY 9

POHNPEI INTL (PNI)(PTPN)

**⚠** Obtain local altimeter setting on CTAF; when not received, procedure NA. Circling NA south of Rwy 9-27. Procedure NA at night except by prior arrangement for runway lights.  
**⚠** DME/DME RNP-0.3 NA. No controlled airspace below 5500. Ships with maximum height of 150 feet MSL may traverse Pohnpei Channel 400 feet off approach end of runway, closing airport at times.

**MISSED APPROACH:**  
 Climb to 3000 direct OHAFU and hold.

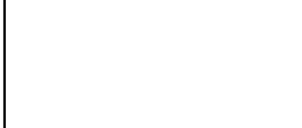
POHNPEI RADIO  
**123.6 (CTAF)** **0**



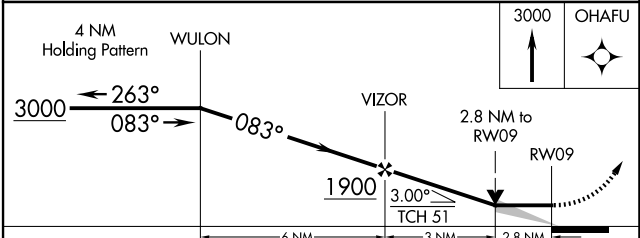
PAC, 14 MAY 2026 to 09 JUL 2026

PAC, 14 MAY 2026 to 09 JUL 2026

ELEV	9	TDZE	9
------	---	------	---



MIRL Rwy 9-27 **0**  
 REIL Rwy 9 and 27



CATEGORY	A	B	C	D
LNAV MDA	960-1¼ 951 (1000-1¼)	960-1½ 951 (1000-1½)	960-3	951 (1000-3)
CIRCLING	960-1¼ 951 (1000-1¼)	960-1½ 951 (1000-1½)	960-3	951 (1000-3)