

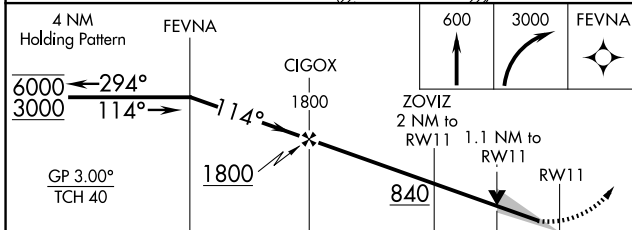
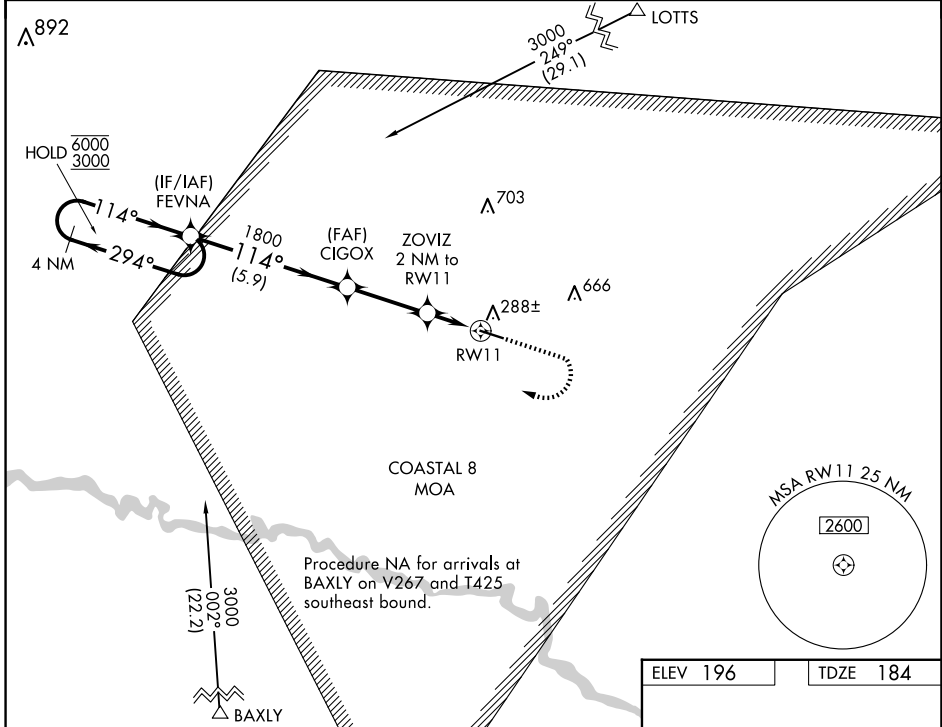
WAAS CH <b>40227</b> <b>W11A</b>	APP CRS <b>114°</b>	Rwy Ldg TDZE Apt Elev	<b>5003</b> <b>184</b> <b>196</b>
--	------------------------	-----------------------------	---

# RNAV (GPS) RWY 11

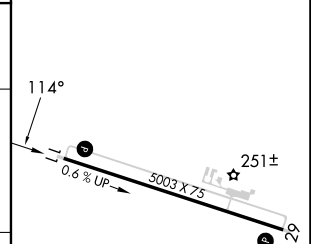
SWINTON SMITH FLD AT REIDSVILLE MUNI (R.VJ)

RNP APCH - GPS.	MISSED APPROACH: Climb to 600 then climbing right turn to 3000 direct FEVNA and hold, continue climb-in-hold to 3000.
▼ For uncompensated Baro-VNAV systems, LNAV/VNAV NA below -15°C or above 54°C.	

AWOS-3PT <b>128.325</b>	JACKSONVILLE CENTER <b>127.575 269.025</b>	CTAF <b>122.9</b>
----------------------------	---	----------------------



ELEV 196	TDZE 184
----------	----------



CATEGORY	A	B	C	D
LPV DA		384- <sup>3</sup> / <sub>4</sub>	200 (200- <sup>3</sup> / <sub>4</sub> )	
LNAV/VNAV DA		457- <sup>7</sup> / <sub>8</sub>	273 (300- <sup>7</sup> / <sub>8</sub> )	
LNAV MDA		540-1	356 (400-1)	
<b>C</b> CIRCLING	620-1 424 (500-1)	680-1 484 (500-1)	860-1 <sup>3</sup> / <sub>4</sub> 664 (700-1 <sup>3</sup> / <sub>4</sub> )	1020-2 <sup>3</sup> / <sub>4</sub> 824 (900-2 <sup>3</sup> / <sub>4</sub> )



SE-4, 14 MAY 2026 to 11 JUN 2026

SE-4, 14 MAY 2026 to 11 JUN 2026