

WAAS Ch <b>42817</b> <b>W23A</b>	APP CRS <b>228°</b>	Rwy Idg TDZE Apt Elev	<b>5002</b> <b>1013</b> <b>1013</b>
--	------------------------	-----------------------------	---

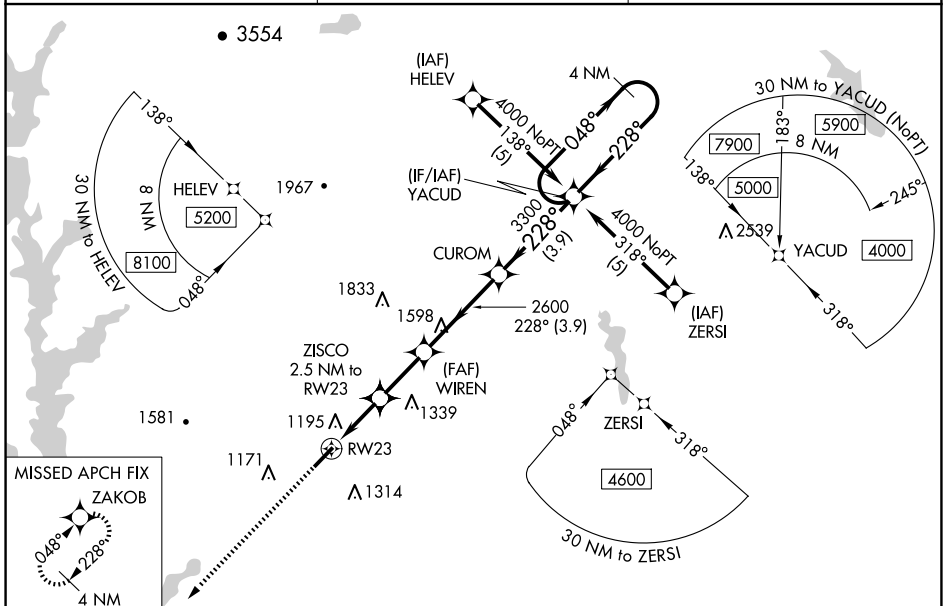
# RNAV (GPS) RWY 23

PICKENS COUNTY (L,Q,K)

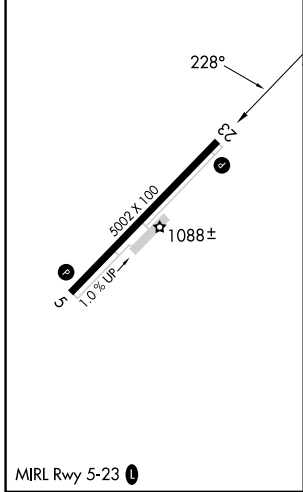
For uncompensated Baro-VNAV systems, LNAV/VNAV NA below -17°C (2°F) or above 46°C (114°F). DME/DME RNP-0.3 NA. When local altimeter setting not received, use Clemson altimeter setting and increase LPV DA to 1356 feet and visibility all Cats ¼ SM; increase LNAV/VNAV DA to 1594 feet; increase all MDAs 60 feet and LNAV Cat C and Circling Cat D visibility ½ SM, increase LNAV Cat D visibility ½ SM. Baro-VNAV NA when using Clemson altimeter setting. VDP NA with Clemson altimeter setting.

**MISSED APPROACH:** Climb to 3000 direct ZAKOB and hold.

AWOS-3 <b>120.0</b>	GREER APP CON * <b>118.8 270.275</b>	UNICOM <b>122.8 (CTAF) 0</b>
------------------------	---	---------------------------------



ELEV 1013	TDZE 1013
-----------	-----------



	VGSI and RNAV glidepath not coincident (VGSI Angle 3.00/TCH 26).			
	ZISCO 2.5 NM to RW23 WIREN 2600 CUROM YACUD RW23			4 NM Holding Pattern 4000
*LNAV only.		3300 2600		GP 3.00° TCH 45
1.5 NM 1 NM 2.3 NM 3.9 NM 3.9 NM				
CATEGORY	A	B	C	D
LPV DA	1310-1		297 (300-1)	
LNAV/VNAV DA	1548-2		535 (600-2)	
LNAV MDA	1500-1	487 (500-1)	1500-1½ 487 (500-1½)	1500-1½ 487 (500-1½)
CIRCLING	1560-1 547 (600-1)	1620-1 607 (700-1)	1620-1¾ 607 (700-1¾)	1780-2½ 767 (800-2½)

SE-2, 14 MAY 2026 to 11 JUN 2026

SE-2, 14 MAY 2026 to 11 JUN 2026