

PUNTA GORDA, FLORIDA



AL-6178 (FAA)

25275

ILS or LOC RWY 4

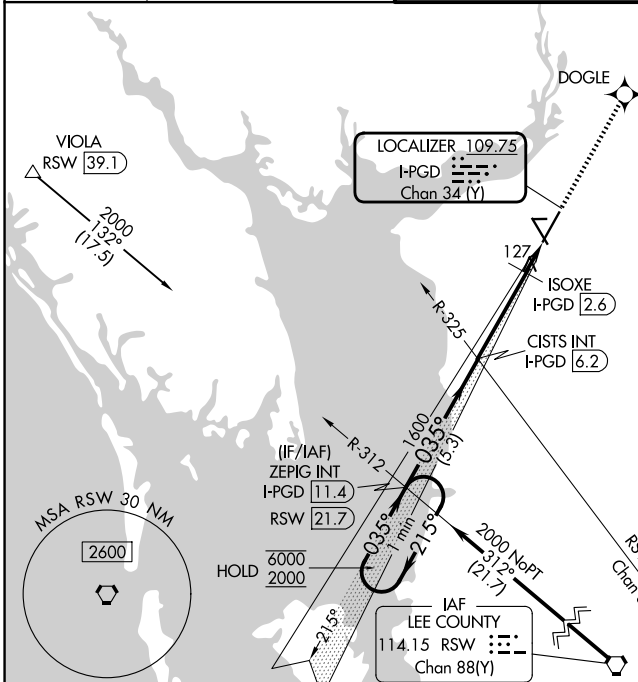
PUNTA GORDA (PGD)

LOC/DME I-PGD 109.75 Chan 34 (Y)	APP CRS 035°	Rwy Ldg TDZE Apt Elev	7193 24 26
---	------------------------	-----------------------------	---------------------------------------

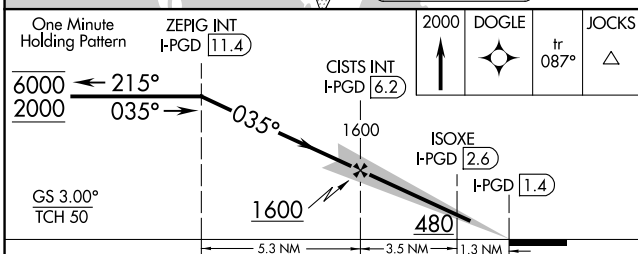
RNP APCH - GPS.



MISSED APPROACH: Climb to 2000 direct DOGLE and on track 087° to JOCKS and hold.

ATIS 135.675	FORT MYERS APP CON★ 127.05 306.2	PUNTA GORDA TOWER★ 121.0 (CTAF) 0	GND CON 119.55	UNICOM 122.975
------------------------	--	---	--------------------------	--------------------------

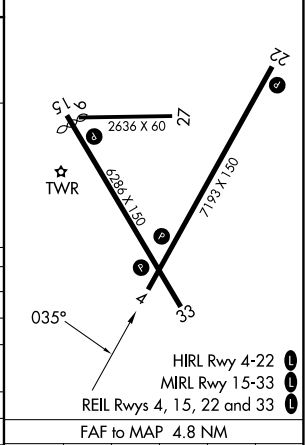


Procedure NA for arrivals on RSW VORTAC airway radials 328 CW 354.



CATEGORY	A	B	C	D
S-ILS 4		256-3/4	232 (300-3/4)	
S-LOC 4	480-1	456 (500-1)	480-1 3/8	456 (500-1 3/8)
CIRCLING	480-1 454 (500-1)	580-1 554 (600-1)	600-1 1/2 574 (600-1 1/2)	740-2 1/4 714 (800-2 1/4)
ISOXE FIX MINIMUMS (DME REQUIRED)				
S-LOC 4	380-1 356 (400-1)			
CIRCLING	460-1 434 (500-1)	580-1 554 (600-1)	600-1 1/2 574 (600-1 1/2)	740-2 1/4 714 (800-2 1/4)

ELEV 26	TDZE 24
---------	---------



Knots	60	90	120	150	180
Min:Sec	4:48	3:12	2:24	1:55	1:36

PUNTA GORDA, FLORIDA
 Amdt 1 05SEP24

26°55'N-81°59'W

PUNTA GORDA (PGD)

ILS or LOC RWY 4

SE-3, 14 MAY 2026 to 11 JUN 2026

SE-3, 14 MAY 2026 to 11 JUN 2026