

APP CRS	Rwy Idg	<b>4429</b>
<b>234°</b>	TDZE	<b>823</b>
	Apt Elev	<b>833</b>

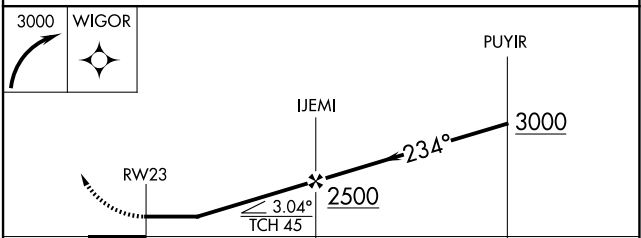
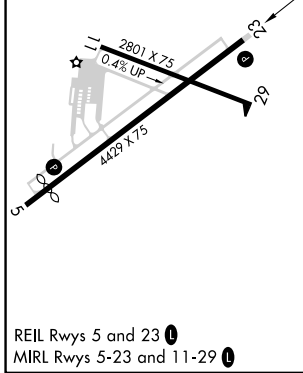
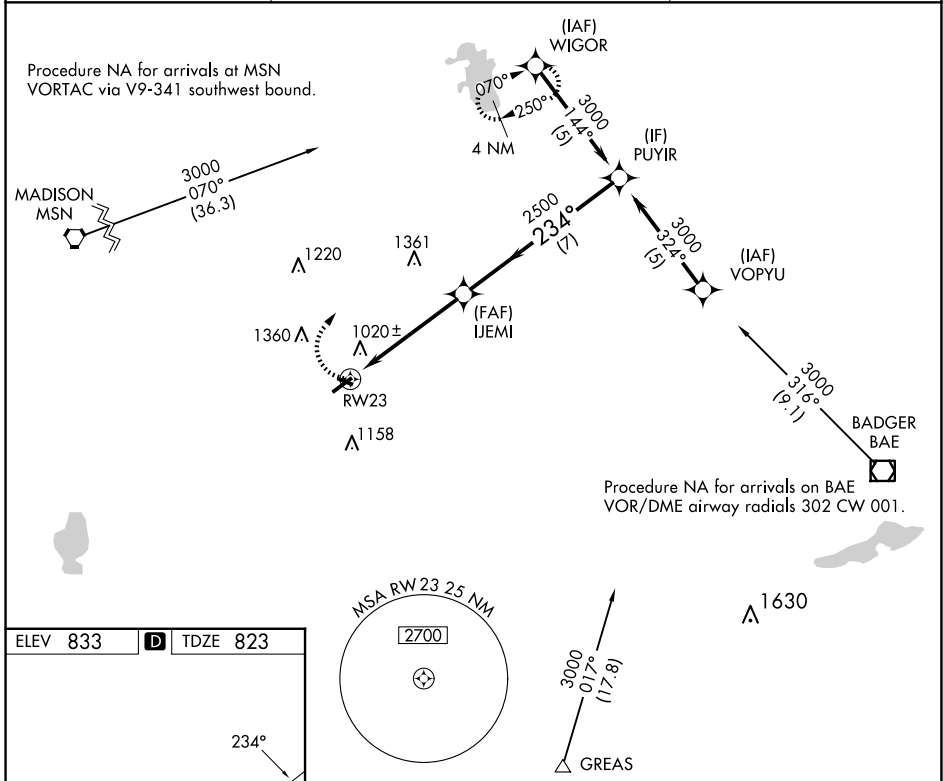
# RNAV (GPS) RWY 23

WATERTOWN MUNI (RYV)

**⚠** Rwy 23 helicopter visibility reduction below 1 SM NA. DME/DME RNP-0.3 NA. When local altimeter setting not received, use Dodge County altimeter setting and increase all MDAs 60 feet, increase LNAV Cat C and D visibility 1/8 SM. Straight-in Rwy 23 NA at night, Circling Rwy 23 NA at night.

**MISSED APPROACH:**  
Climbing right turn to 3000 direct WIGOR and hold.

AWOS-3 <b>119.975</b>	MADISON APP CON * <b>119.15 343.7</b>	UNICOM <b>122.8 (CTAF)</b>
--------------------------	--	-------------------------------



CATEGORY	A	B	C	D
LNAV MDA	1420-1 597 (600-1)		1420-1¾ 597 (600-1¾)	
CIRCLING	1420-1 587 (600-1)	1440-1 607 (700-1)	1720-2¾ 887 (900-2¾)	1720-3 887 (900-3)

EC-3, 14 MAY 2026 to 11 JUN 2026

EC-3, 14 MAY 2026 to 11 JUN 2026