

APP CRS **091°**  
 Rwy Ldg **3515**  
 TDZE **737**  
 Apt Elev **737**

**RNAV (GPS) RWY 9**  
 CPT BEN SMITH AIRFIELD/MONROE CITY (K52)

RNP APCH - GPS.

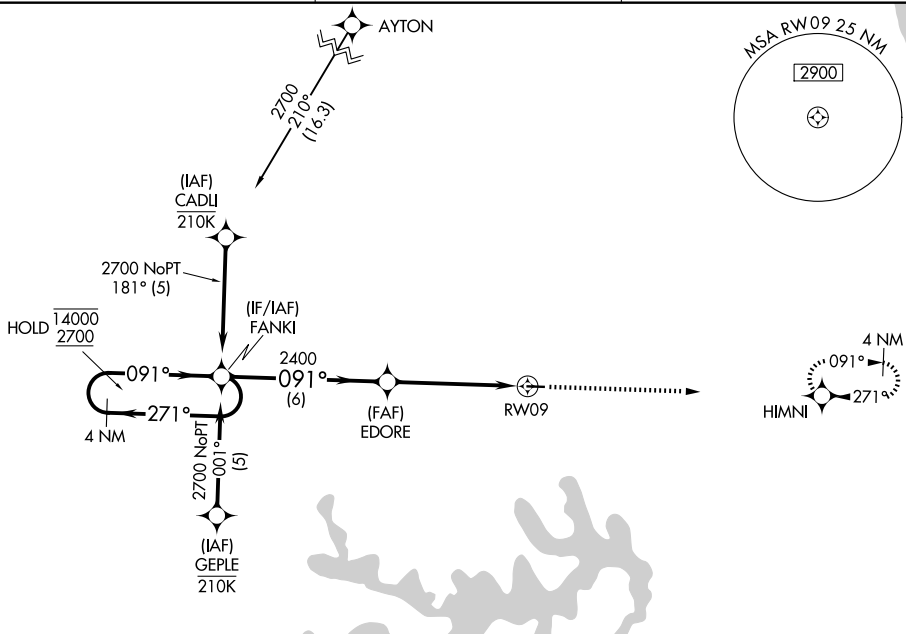
Procedure NA at night. Rwy 9 helicopter visibility reduction below 1 SM NA. Use Quincy, IL altimeter setting.

MISSED APPROACH: Climb to 2600 direct HIMNI and hold.

UIN ASOS  
**121.425**

KANSAS CITY CENTER  
**126.225 317.775**

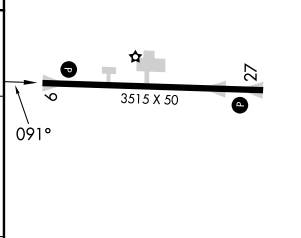
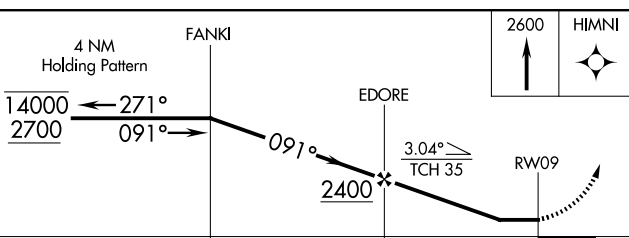
UNICOM  
**122.8 (CTAF)**



NC-3, 14 MAY 2026 to 11 JUN 2026

NC-3, 14 MAY 2026 to 11 JUN 2026

ELEV 737      TDZE 737



CATEGORY	A	B	C	D
LNVA MDA	1280-1	543 (600-1)	1280-1 $\frac{1}{8}$ 543 (600-1 $\frac{1}{8}$ )	NA
CIRCLING	1380-1	643 (700-1)	1380-1 $\frac{3}{4}$ 643 (700-1 $\frac{3}{4}$ )	NA

MIRL Rwy 9-27