

APP CRS <b>002°</b>	Rwy Idg <b>5001</b>
	TDZE <b>673</b>
	Apt Elev <b>679</b>

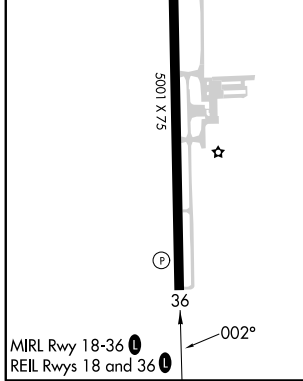
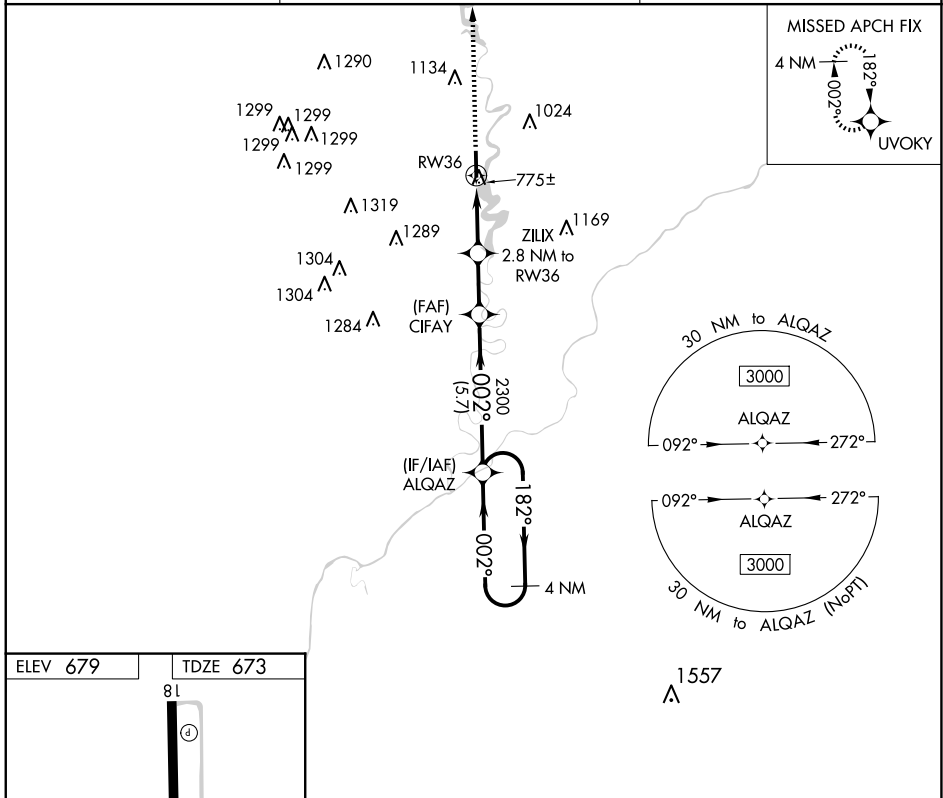
# RNAV (GPS) RWY 36

WHITE COUNTY (MCX)

**▽** DME/DME RNP-0.3 NA. Straight-in Rwy 36 NA at night, Circling Rwy 36 NA at night. Rwy 36 helicopter visibility reduction below 1 SM NA.

**▲** MISSED APPROACH: Climb to 3000 direct UVOKY and hold.

AWOS-3P <b>124.05</b>	GRISSOM APP CON ★ <b>123.85 291.675</b>	UNICOM <b>122.8 (CTAF) 0</b>
--------------------------	--	---------------------------------



3000	UVOKY	VGSJ and descent angles not coincident (VGSJ Angle 4.00/TCH 25).		4 NM
		ZILIX	CIFAY	ALQAZ Holding Pattern
		2.8 NM to RW36		
		RW36		
		3.00° TCH 40		
		1600	2300	
		2.8 NM	2.2 NM	5.7 NM
CATEGORY	A	B	C	D
LNAV MDA	1040-1 367 (400-1)			
<b>C</b> CIRCLING	1200-1 521 (600-1)	1340-1 661 (700-1)	1500-2½ 821 (900-2½)	1500-2¾ 821 (900-2¾)

EC-2, 14 MAY 2026 to 11 JUN 2026

EC-2, 14 MAY 2026 to 11 JUN 2026