

|   |                        |                             |   |
|---|------------------------|-----------------------------|---|
| WAAS<br>CH <b>70527</b><br>W <b>18A</b> | APP CRS<br><b>182°</b> | Rwy Idg<br>TDZE<br>Apt Elev | <b>4000</b><br><b>698</b><br><b>698</b> |
|---|------------------------|-----------------------------|---|

# RNAV (GPS) RWY 18

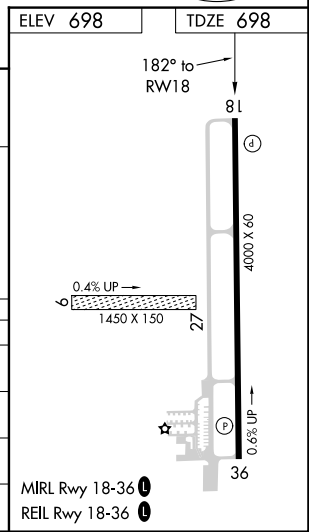
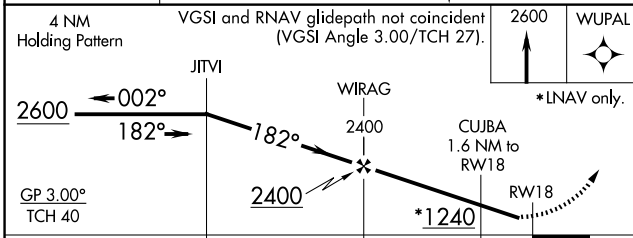
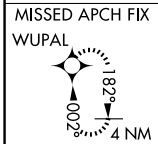
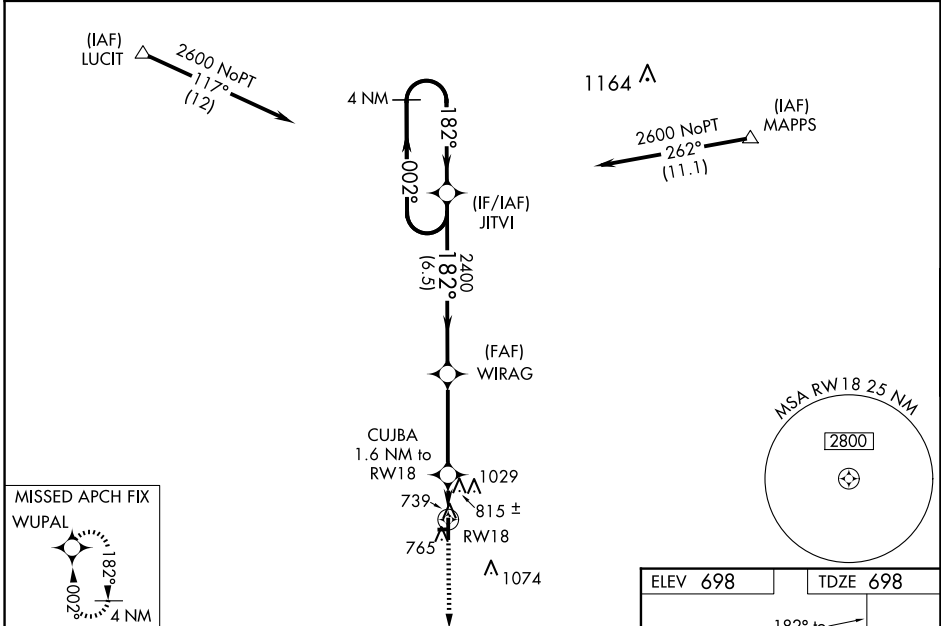
JASPER COUNTY (R.Z.L.)

RNP APCH.

**⚠** Baro-VNAV NA when using Knox altimeter setting. For uncompensated Baro-VNAV systems LNAV/VNAV NA below -22°C or above 54°C. When local altimeter setting not received, use Knox altimeter setting: increase LPV DA to 1026 feet and increase visibility all Cats ¼ SM; increase LNAV/VNAV DA to 1174 feet and visibility all Cats ½ SM; increase all MDAs 80 feet and LNAV visibility Cat C ½ SM, and Circling visibility Cat C ¼ SM. Rwy 18 helicopter visibility reduction below 1 SM NA. Circling NA to Rwy's 9 and 27.

**MISSED APPROACH:**  
Climb to 2600 direct WUPAL and hold.

|                           |                                      |                                 |
|---------------------------|--------------------------------------|---------------------------------|
| AWOS-3P<br><b>119.175</b> | CHICAGO CENTER<br><b>132.5 284.7</b> | UNICOM<br><b>122.8 (CTAF) 0</b> |
|---------------------------|--------------------------------------|---------------------------------|



| CATEGORY     | A                          | B                  | C                          | D  |
|--------------|----------------------------|--------------------|----------------------------|----|
| LPV DA       | 948-1 250 (300-1)          |                    |                            | NA |
| LNAV/VNAV DA | 1096-1 3/8 398 (400-1 3/8) |                    |                            | NA |
| LNAV MDA     | 1080-1                     | 382 (400-1)        | 1080-1 1/8 382 (400-1 1/8) | NA |
| CIRCLING     | 1120-1 422 (500-1)         | 1380-1 682 (700-1) | 1440-2 1/4 742 (800-2 1/4) | NA |

EC-2, 14 MAY 2026 to 11 JUN 2026

EC-2, 14 MAY 2026 to 11 JUN 2026