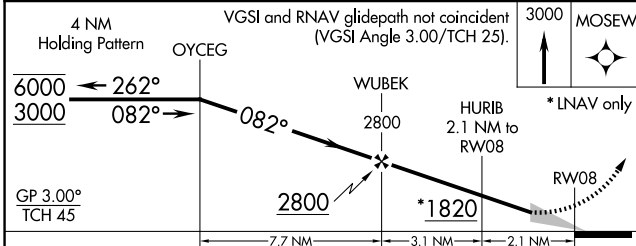
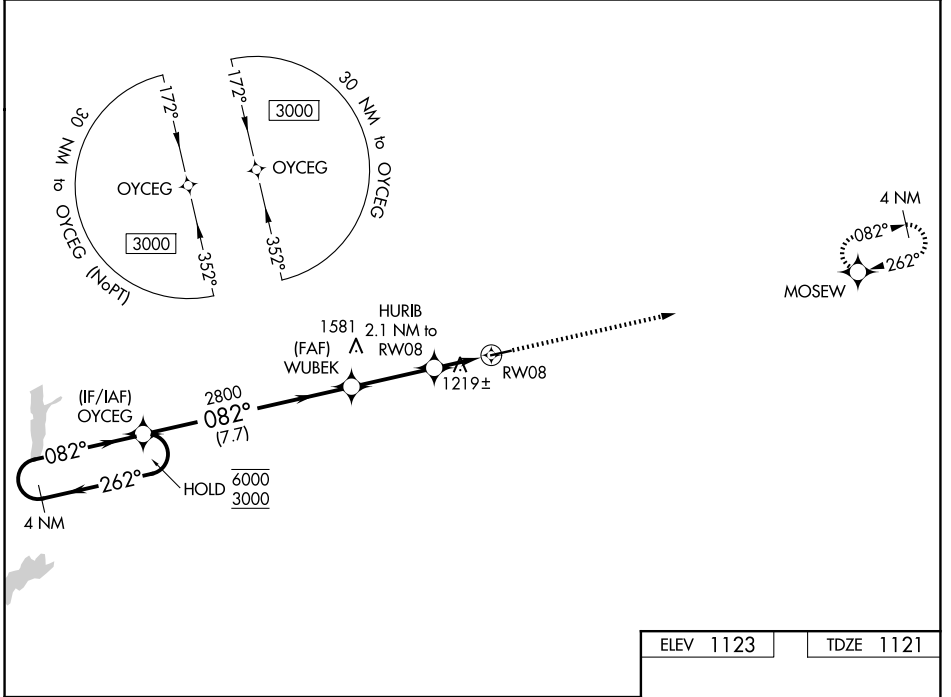


WAAS CH 90420 W08A	APP CRS 082°	Rwy Ldg TDZE Apt Elev	4300 1121 1123
--	------------------------	-----------------------------	---

RNAV (GPS) RWY 8

RANDOLPH COUNTY (I22)

RNP APCH.		MISSED APPROACH: Climb to 3000 direct MOSEW and hold.
▽ ▲ NA	Baro-VNAV NA.	
VES AWOS-3PT 125.9	COLUMBUS APP CON 134.45 352.05	UNICOM 123.0 (CTAF) 1



ELEV 1123	TDZE 1121
-----------	-----------

MIRL Rwy 8-26 **1**
REIL Rwy 8 and 26 **1**

CATEGORY	A	B	C	D
LPV DA	1430-7/8	309 (400-7/8)		NA
LNAV/VNAV DA	1430-7/8	309 (400-7/8)		NA
LNAV MDA	1560-1	439 (500-1)	1560-1 1/4 439 (500-1 1/4)	NA
CIRCLING	1620-1	497 (500-1)	1820-2 697 (700-2)	NA

EC-2, 14 MAY 2026 to 11 JUN 2026

EC-2, 14 MAY 2026 to 11 JUN 2026